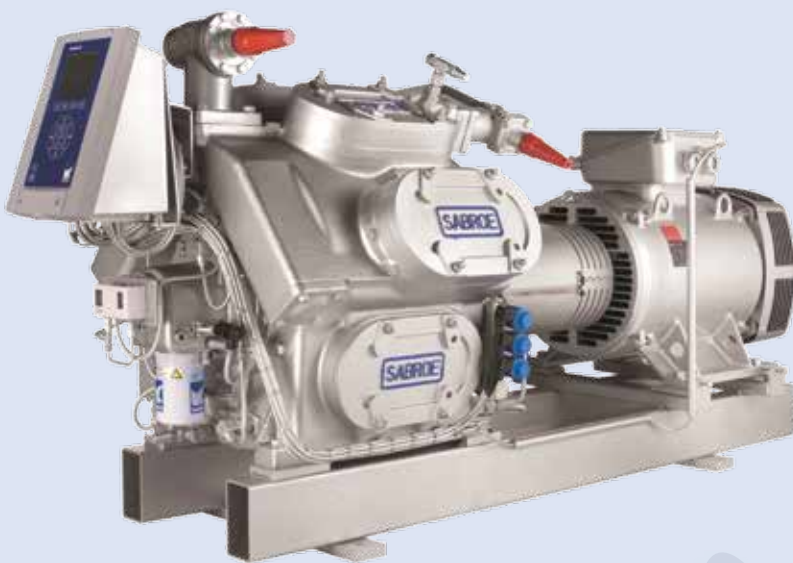


SMC/TSMC 100 Mk 4 LL  
Reciprocating compressor unit





## Manual for SMC and TSMC Mk 4 LL

Compressor type	<input type="checkbox"/> SMC <input type="checkbox"/> TSMC <input type="checkbox"/> S <input type="checkbox"/> L <input type="checkbox"/> E <input type="checkbox"/> 104 <input type="checkbox"/> 106 <input type="checkbox"/> 108 <input type="checkbox"/> 112 <input type="checkbox"/> 116
Compressor no.	
Refrigerant	<input type="checkbox"/> R717 <input type="checkbox"/> R22 <input type="checkbox"/> R134a <input type="checkbox"/> R404A <input type="checkbox"/> R507    Other _____
Control	<input type="checkbox"/> Unisab III <input type="checkbox"/> None <input type="checkbox"/> Other
Compressor cooling	<input type="checkbox"/> Thermopump
	<input type="checkbox"/> Water-cooled top and side covers
	<input type="checkbox"/> Air-cooled top and side covers
	<input type="checkbox"/> Air-cooled top covers and water-cooled side covers
	<input type="checkbox"/> Air-cooled top and side covers + oil cooling (refrigerant-cooled)
Drive type	<input type="checkbox"/> Fixed speed <input type="checkbox"/> Variable speed (VSD)
	<input type="checkbox"/> Explosion-proof electrical design
	<input type="checkbox"/> Oil return on parallel systems
Oil separator	<input type="checkbox"/> Sabroe OVUR <input type="checkbox"/> Sabroe OHUR
Intermediate cooling system	<input type="checkbox"/> With internal intermediate cooling system
	<input type="checkbox"/> With external intermediate cooling system

<p>Safety valve: Data for calculation of downstream line according to EN 13136</p>	Vessel data		
	Type	External surface [m <sup>2</sup> ]	Design pressure [bar]
	Condenser		
	Evaporator		
	Liquid separator		
	Oil separator		
	Oil cooler		
	Economiser		
	Desuperheater		
	Subcooler		
	Other		
	Pressure loss, if any, from safety valve to customer connection (based on design pressure) [bar] _____		
	Safety valve type: Back-pressure dependent <input type="checkbox"/> Back-pressure independent <input type="checkbox"/>		

## Contents

<b>1. Spare parts SMC/TSMC</b>	<b>6</b>
1.1.1 How to use the parts list	6
1.1.2 Amendments	6
1.1.3 Parts list	7
1.1.4 Tools for compressor	42
1.1.5 Supplementary tool set for SMC 100 Mk4 and HPC Mk4	45
1.1.6 Tool set for change of main bearings	46
<b>2. Drawings</b>	<b>47</b>
2.1.1 SMC 104-106-108	47
2.1.2 TSMC 108	48
2.1.3 SMC 112-116	49
2.1.4 TSMC 116	50
2.1.5 Piston, cylinder liner and connecting rod	51
2.1.6 Shaft seal	52
2.1.7 Covers	53
2.1.8 Crankshaft, bearings and coupling	54
2.1.9 Oil system	55
2.1.10 Unloading frame/cylinder	56
2.1.11 By-pass and service valves	57
2.1.12 Stop valves	58
2.1.13 Suction filters	59
2.1.14 Thermo pump cover	60
2.1.15 Analogue control and safety equipment	61
2.1.16 Coupling AMR 312	62
2.1.17 Coupling CFA	63
2.1.18 Solenoid valve controlled oil return	65
2.1.19 Oil separator, OHUR	65

# 1. Spare parts SMC/TSMC

## 1.1.1 How to use the parts list

The key to identify a spare part is the pos. no. of the spare part.

By means of the pos. no., the position of the spare part can be found on the spare parts drawings.

Usually the spare part no. is stated next to the pos. no. If no spare part no. is stated, it may be because the part is not considered a spare part or because the part is not sold as a spare part.

Parts which are not sold individually are contained in spare parts kits.

The spare parts list contains single parts and components, complete main parts, e.g. cylinder liner with suction valve, kit assemblies which is a collection of spare parts, service kits and gasket kits.

Spare parts which are not available as single parts will be contained in complete main parts as sub parts, kit assemblies, service kits and gasket kits.

Example

Component:	Pos 19-1, part number 3112.085, designation: Cylinder liner with suction valve S&L
Kit assembly:	Part number 3184.487, designation: Kit assembly RT pump, complete
Service kit:	Part number 3188.027LL, designation: Service kit ring plates
Gasket kit:	Part number 3188.009, designation: Gasket kit unloading cylinder

The parts list is divided into sections with the main components of the compressor as headlines.

For each main part, e.g. cylinder liner complete, the part no. of the main part is stated first and then the pos. nos. of all single parts contained in the main part.

Then all kits related to the main part - including the pos. nos. of all sub parts contained in these kits - are indicated.

In some cases a kit will be related to several main parts which is why the kit is not indicated until after the relevant main parts.

### Example

A ring plate kit contains a discharge valve ring plate pos. 20C, a suction valve ring plate pos. 19F and valve springs. Therefore, the ring plate kit will be indicated after the discharge valve ring plate pos. 20.

## 1.1.2 Amendments

2015.12	New document (named "Upgrade 2015") based on Spare parts manual 006298 en, but with bearing shells as introduced in Technical information 2015/09.
2016.09	Upgrade kits based on former versions of SMC Mk 4 have been omitted. Update with new working valves, as introduced in Technical Information 2016/02. Update of Spare Parts Kits for stop valves. Renamed to SMC/TSMC 100 Mk 4 LL (Long Life).

### 1.1.3 Parts list

Pos. no	Part no.	Description	Kit Qty.	Compressor								
				SMC					TSMC			
				104	106	108	112	116	108	116		
		<b>Compressor frame</b>										
1 A-1	<b>3111.065</b>	Frame SMC 104		1								
1 A-2	<b>3111.066</b>	Frame SMC 106			1							
1 A-3	<b>3111.067</b>	Frame SMC 108				1						
1 A-4	<b>3111.068</b>	Frame TSMC 108					1					
1 A-5	<b>3111.071</b>	Frame SMC 112						1				
1 A-6	<b>3111.069</b>	Frame SMC 116							1			
1 A-7	<b>3111.070</b>	Frame TSMC 116									1	
1 B-1	<b>1226.015</b>	Oil level glass		1	1	1	1	1	1	1	1	
1 C-1	1331.543	O-ring, Included in gasket kit 3188.111 and 3188.141	1									
1 D-1	<b>1424.148</b>	Hexagon head M6 x 18		4	4	4	4	4	4	4	4	
		<b>Top cover air cooled</b>										
2 A-1	<b>3113.263</b>	Top cover S-L-E, SMC 100 Mk4		1	2	3	6	8	2	7		
2 A-2	<b>3113.264</b>	Top cover with flange , S-L-E SMC 100 Mk4		1	1	1			2	1		
2 E-1	<b>1424.083</b>	Cylinder screw M14 x 90		30	46	62	96	128	60	128		
2 F-1	<b>1424.090</b>	Cylinder screw M14 x 120		2	2	2			4	2		
		<b>Top cover water cooled</b>										
2 A-1	<b>3113.263</b>	Top cover S-L-E, SMC 100 Mk4		1	2	3	6	8	2	7		
2 A-2	<b>3113.264</b>	Top cover with flange , S-L-E SMC 100 Mk4		1	1	1			2	1		
2 B-1	<b>3113.260</b>	Water cover for top cover with flange, SMC100 Mk4		1	1	1			2	1		
2 B-2	<b>3113.259</b>	Water cover left, SMC100 Mk4		1	1	2	3	4	2	4		
2 B-3	<b>3113.258</b>	Water cover right, SMC100 Mk4			1	1	3	4		3		
2 E-1	<b>1424.083</b>	Cylinder screw M14 x 90		22	34	46	72	96	44	94		
2 F-1	<b>1424.090</b>	Cylinder screw M14 x 120		2	2	2						
2 G-1/ 2 J-1	<b>1432.036</b>	Nut M14		16	24	32	48	64	32	64		
2 H-1	<b>2112.171</b>	Staybolt M14 x 138, SMC 100		8	12	16	24	32	16	32		
	<b>3184.380</b>	<b>Kit assembly staybolts for top cover</b>		2	3	4	6	8	4	8		
2 G-1/ 2 J-1	1432.036	Nut M14	8									
2 H-1	2112.171	Staybolt M14 x 138, SMC 100	4									
		<b>Side cover - air cooled</b>										
3 A-1	<b>3113.148</b>	Side cover, air cooled		2	2	2	4	4	2	4		
3 E-1	<b>1424.246</b>	Hexagon head screw M14 x 65		32	32	32	64	64	32	64		

Pos. no	Part no.	Description	Kit Qty.	Compressor						
				SMC					TSMC	
				104	106	108	112	116	108	116
		<b>Side cover - water cooled</b>								
3 A-2	<b>3113.265</b>	Side cover with cooling fins, SMC 100 Mk4		2	2	2	4	4	2	4
3 B-1	<b>3113.258</b>	Water cover right, SMC100 Mk4		1	1	1	2	2	1	2
3 B-2	<b>3113.259</b>	Water cover left, SMC100 Mk4		1	1	1	2	2	1	2
3 F-1	<b>1424.241</b>	Hexagon head screw M14 x 40		24	24	24	48	48	24	48
3 G1/ 3 J-1	<b>1432.036</b>	Nut M14		8	8	8	16	16	8	16
		<b>Side cover water cooled kit</b>								
	<b>3184.381</b>	<b>Kit assembly staybolts for side cover</b>		2	2	2	4	4	2	4
3 G-1/ 3 J-1	1432.036	Nut M14	8							
3 H-1	2112.164	Staybolt M14 x 85, SMC/HPC 100Mk4	4							
	<b>3188.119</b>	<b>Gasket kit top/side cover SMC 104Mk4</b>		1						
2 C-1/ 3 C-1	2353.189	Gasket for top and side cover	4							
25 AG-1	2354.105	Gasket for valve/compr.	1							
25 AG-1	1331.571	O-ring 85.32 x 3.53	1							
	<b>3188.120</b>	<b>Gasket kit top/side cover SMC 106 Mk4</b>			1					
2 C-1/ 3C-1	2353.189	Gasket for top and side cover	5							
25 AG-1	2354.105	Gasket for valve/compr.	1							
25 AG-1	1331.571	O-ring 85.32 x 3.53	1							
	<b>3188.121</b>	<b>Gasket kit top/side cover SMC 108 Mk4</b>				1				
2 C-1/ 3 C-1	2353.189	Gasket for top and side cover	6							
25 AG-1	2354.105	Gasket for valve/compr.	1							
25 AG-1	1331.571	O-ring 85.32 x 3.53	1							
25 AB-1	1331.697	O-ring 82.14 x 3.53	1							
	<b>3188.122</b>	<b>Gasket kit top/side cover SMC 112 Mk4</b>					1			
2 C-1/ 3 C-1	2353.189	Gasket for top and side cover	10							
	<b>3188.123</b>	<b>Gasket kit top/side cover T/SMC 116 Mk4</b>						1		1
2 C-1/ 3 C-1	2353.189	Gasket for top and side cover	12							
25 AG-1	2354.105	Gasket for valve/compr.	1							
25 AG-1	1331.571	O-ring 85.32 x 3.53	1							



Pos. no	Part no.	Description	Kit Qty.	Compressor						
				SMC					TSMC	
				104	106	108	112	116	108	116
	<b>3188.124</b>	<b>Gasket kit top/side water covers SMC 104 Mk4</b>		1						
2 D-1	1331.593	O-ring 253.59 x 3.53	1							
2 D-2/ 3 D-1	1331.594	O-ring 266.29 x 3.53	3							
	<b>3188.125</b>	<b>Gasket kit top/side water covers SMC 106Mk4</b>			1					
2 D-1	1331.593	O-ring 253.59 x 3.53	1							
2 D-2/ 3 D-1	1331.594	O-ring 266.29 x 3.53	4							
	<b>3188.126</b>	<b>Gasket kit top/side water covers SMC 108Mk4</b>				1				
2 D-1	1331.593	O-ring 253.59 x 3.53	1							
2 D-2/ 3 D-1	1331.594	O-ring 266.29 x 3.53	5							
	<b>3188.127</b>	<b>Gasket kit top/side water covers T/SMC 108Mk4</b>							1	
2 D-1	1331.593	O-ring 253.59 x 3.53	2							
2 D-2/ 3 D-1	1331.594	O-ring 266.29 x 3.53	4							
	<b>3188.128</b>	<b>Gasket kit top/side water covers SMC 112 Mk4</b>					1			
2 D-2	1331.594	O-ring 266.29 x 3.53	10							
	<b>3188.129</b>	<b>Gasket kit top/side water covers SMC 116 Mk4</b>						1		
2 D-2	1331.594	O-ring 266.29 x 3.53	12							
	<b>3188.130</b>	<b>Gasket kit top/side water covers T/SMC 116 Mk4</b>								1
2 D-1	1331.593	O-ring 253.59 x 3.53	1							
2 D-2/ 3 D-1	1331.594	O-ring 266.29 x 3.53	11							
		<b>RT pump</b>								
	<b>3141.187</b>	<b>Complete RT pump</b>		1	1	1	1	1	1	1
4 Q-1	1331.546	O-ring 72.69 x 2.62	1							
4 F-1	1349.475	Male stud coupling	1							
4 F-1	1349.476	Plug with nut	1							
	1349.349	Threaded plug with gasket 1/8	3							
	1349.189	Threaded plug with gasket 1/4	3							
	1349.350	Threaded plug with gasket 3/8	3							
	1349.351	Threaded plug with gasket 1/2	1							
4 D-1	1361.107	Needle valve	3							
4 L-1	1364.306	Check valve 16 bar	1							
	3141.194	Nozzle with 1 mm bleedhole M6x10	1							
4 E-1	1413.001	Tight fitting bolt M8-10x30	1							
	1413.359	Cylinder screw M8x35	4							
4 V-1	1445.093	Pin Ø8m6x50	1							
9 B-1	2311.075	Nipple	1							

Pos. no	Part no.	Description	Kit Qty.	Compressor							
				SMC					TSMC		
				104	106	108	112	116	108	116	
4 K-1	3141.184	End cover	1								
4 S-1	3141.192	Gear for oil pump. T/SMC 100	1								
4 R-1	3141.185	Gear with shaft for oil pump. T/SMC 100	1								
4 T-1	3141.188	Journal bearing 20/23x15	2								
4 P-1	3141.189	Journal bearing 20/23x20	2								
4 A-1	3141.190	RT Pump housing	1								
	<b>3184.487</b>	<b>Kit assembly complete RT pump</b>		1	1	1	1	1	1	1	1
	3141.187	Complete RT pump	1								
	1413.387	Cylinder screw M12 x 35	1								
4 C-1	1413.388	Cylinder screw M12 x 40	11								
	1414.200	Rivet, self drilling 2,9x6	4								
	<b>3141.199</b>	<b>Complete RT pump Viton O-R (for R1270)</b>		1	1	1	1	1	1	1	1
4 Q-1	1331.648	O-ring 72.69 x 2.62 FKM	1								
4 F-1	1349.475	Male stud coupling	1								
4 F-1	1349.476	Plug with nut	1								
	1349.349	Threaded plug with gasket 1/8	3								
	1349.189	Threaded plug with gasket 1/4	3								
	1349.350	Threaded plug with gasket 3/8	3								
	1349.351	Threaded plug with gasket 1/2	1								
4 D-1	1361.107	Needle valve	3								
4 L-1	1364.306	Check valve 16 bar	1								
	3141.194	Nozzle with 1 mm bleedhole M6x10	1								
4 E-1	1413.001	Tight fitting bolt M8-10x30	1								
	1413.359	Cylinder screw M8x35	1								
4 V-1	1445.093	Pin Ø8m6x50	1								
9 B-1	2311.075	Nipple	1								
4 K-1	3141.184	End cover	1								
4 S-1	3141.192	Gear for oil pump. T/SMC 100	1								
4 R-1	3141.185	Gear with shaft for oil pump. T/SMC 100	1								
4 T-1	3141.188	Journal bearing 20/23x15	2								
4 P-1	3141.189	Journal bearing 20/23x20	2								
4 A-1	3141.190	RT Pump housing	1								
	<b>3184.488</b>	<b>Kit assembly complete RT pump Viton O-R</b>		1	1	1	1	1	1	1	1
	3141.199	Complete RT pump Viton O-R (for R1270)	1								
	1413.387	Cylinder screw M12 x 35	1								
4 C-1	1413.388	Cylinder screw M12 x 40	11								
	1414.200	Rivet, self drilling 2,9x6	4								
	<b>3141.200</b>	<b>Mounting parts for RT pump</b>		1	1	1	1	1	1	1	1
	1413.387	Cylinder screw M12 x 35	1								
4 C-1	1413.388	Cylinder screw M12 x 40	11								
7 C-1	1413.392	Cylinder screw M12 x 60	2								
7 B-2	1436.083	Washer	2								
7 A-1	2125.281	Coupling	1								
4 B-1	2353.260	Gasket	1								
	<b>3184.489</b>	<b>Kit assembly coupling for RT pump SMC 100 Mk4</b>		1	1	1	1	1	1	1	1
7 C-1	1413.392	Cylinder screw M12 x 60	2								

Pos. no	Part no.	Description	Kit Qty.	Compressor						
				SMC					TSMC	
				104	106	108	112	116	108	116
7 B-2	1436.083	Washer	2							
7 A-1	2125.281	Coupling	1							
	<b>3184.351</b>	<b>Kit assembly valves oil pump housing</b>		1	1	1	1	1	1	1
4 D-1	1361.107	Needle valve	1							
4E-1	1361.107	Needle valve	1							
4K-1	1361.107	Needle valve	1							
4 L-1	1364.306	Check valve 16 bar	1							
	<b>3184.479</b>	<b>Kit assembly differential pressure indicator</b>		1	1	1				
4 H-1	2212.157	Intermediate bracket	1							
4 J-1	1413.332	Cylinder screw M5 x 20	4							
4 N-1	1373.331	Differential pressure indicator, electronic	1							
	1437.021	Spring washer	4							
4 G-1	2353.244	Gasket	1							
	<b>3184.480</b>	<b>Kit assembly differential pressure control mechanical</b>			1	1				
4 H-1	2212.157	Intermediate bracket	1							
4 J-1	1413.332	Cylinder screw M5 x 20	4							
4 N-2	1373.342	Differential pressure indicator, mechanical	1							
	1437.021	Spring washer	4							
4 G-1	2353.244	Gasket	1							
	<b>3184.382</b>	<b>Kit assembly plugs oil pump housing</b>		1	1	1	1	1	1	1
	1349.189	Plug with gasket 1/4	5							
	1349.349	Plug with gasket 1/8	2							
	1343.026	Plug with gasket 3/8	1							
	1343.027	Plug with gasket 1/2	1							
	1331.427	Seal-ring dia.23.8	1							
	1349.248	Sealing ring 1/2	1							
	<b>3184.471</b>	<b>Kit assembly bracket for instrument console (After Nov. 2005)</b>		1	1	1	1	1	1	1
	2213.976	Bracket for safety cut-out	1							
	1424.145	Hexagon head screw M6 x 12	2							
	1436.033	Washer 12.5/6.4 x 1.6	2							
	<b>3188.229</b>	<b>Gasket kit RT pump SMC 100 Mk4</b>		1	1	1	1	1	1	1
4 B-1	2353.260	Gasket for RT pump housing	1							
4 G-1	2353.244	Gasket for differential pressure control	1							
4 Q-1	1331.546	O-ring 72.69 x 2.62	1							
		<b>Endcover at pump end</b>								
5 A-1	<b>3113.266</b>	Bearing cover		1	1	1	1	1	1	1
5 B-1	<b>1424.241</b>	Hexagon head screw M14 x 40		14	14	14				
		<b>Endcover at shaft seal end</b>								
6 A -1	<b>3113.124</b>	Bearing cover		1	1	1	1	1	1	1
6 B-1	<b>1424.245</b>	Cylinder screw M14 x 60		14	14	14	14	14	14	14
6 E-1	<b>1436.076</b>	Washer M14		14	14	14	14	14	14	14

Pos. no	Part no.	Description	Kit Qty.	Compressor						
				SMC					TSMC	
				104	106	108	112	116	108	116
		<b>Endcover at shaft seal end kit</b>								
	<b>3188.132</b>	<b>Gasket kit end/bearing cover T/SMC 104-108 Mk4</b>		1	1	1			1	
5 D-1	2353.225	Gasket 0.3 mm	1							
5 D-2	2353.226	Gasket 0.5 mm	1							
5 D-3	2353.227	Gasket 0.75 mm	1							
5 D-4	2353.228	Gasket 1.0 mm	1							
6 D-1	2353.011	Gasket	1							
8 B-1	2353.005	Gasket	1							
38E-1	1331.597	O-ring 29.51 x 5.33	1							
	<b>3188.133</b>	<b>Gasket kit end/bearing cover T/SMC 112-116 Mk4</b>					1	1		1
5 D-3	2353.227	Gasket 0.75 mm	1							
5 D-4	2353.228	Gasket 1.0 mm	1							
5 D-5	2353.232	Gasket 1.3 mm	1							
5 D-6	2353.233	Gasket 1.5 mm	1							
5 D-7	2353.234	Gasket 1.75 mm	1							
5 D-8	2353.235	Gasket 2.0 mm	1							
6 D-1	2353.011	Gasket	1							
8 B-1	2353.005	Gasket	1							
38E-1	1331.597	O-ring 29.51 x 5.33	1							
49 J	2356.140	Gasket 34/27 x 1.5	2							
	<b>3188.134</b>	<b>Service kit main bearings T/SMC 104-108 Mk4</b>		1	1	1			1	
5 C-1, 6 C-1	2132.021	Main bearing	2							
	3188.132	Gasket kit end/bearing cover T/SMC 104-108 Mk4	1							
	<b>3188.720</b>	<b>Service kit main bearings T/SMC 112-116 Mk4</b>					1	1		1
5 C-1, 6 C-1	2132.021	Main bearing	2							
49 E	2133.025-H	Half section bearing metal - polymer	8							
	3188.133	Gasket kit end/bearing cover T/SMC 112-116 Mk4	1							
	<b>3188.237</b>	<b>Service kit main bearing T/SMC 104-108 Mk4 R717 TE&gt;0 Degrees C</b>		1	1	1			1	
5 C-1	2132.021	Main bearing	1							
6 C-1	2132.128	Thrust bearing washer	1							
6 C-2	2132.129	Main bearing for separate thrust ring	1							
	3188.132	Gasket kit end/bearing cover T/SMC 104-108 Mk4	1							
	<b>3188.719</b>	<b>Service kit Main bearing w. thrust ring T/SMC 112-116 Mk4 R717 TE&gt;0 Degrees C</b>					1	1		1
5 C-1	2132.021	Main bearing	1							
6 C-1	2132.128	Thrust bearing washer	1							
6 C-2	2132.129	Main bearing for separate thrust ring	1							

Pos. no	Part no.	Description	Kit Qty.	Compressor						
				SMC					TSMC	
				104	106	108	112	116	108	116
49 E	2133.025-H	Half section bearing metal - polymer	8							
	3188.133	Gasket kit end/bearing cover T/SMC 112-116 Mk4	1							
		<b>Shaft seal</b>								
	<b>3184.355</b>	<b>Kit assembly shaft seal cover</b>		1	1	1	1	1	1	1
8 A-1	3113.175	Shaft seal cover	1							
8 B-1	2353.005	Gasket for cover	1							
8 C-1	1424.194	Cylinder screw M10 x 40	6							
	<b>3184.356</b>	<b>Kit assembly hose connection</b>		1	1	1	1	1	1	1
8 D-1	1345.143	Hose connection	1							
8 E-1	1241.190	Hose	1							
	<b>3184.357</b>	<b>Kit assembly shaft seal</b>		1	1	1	1	1	1	1
8 F-1	1437.295	Spirolox ring dia. 76	1							
8 G-1	3126.169	Lock spring	1							
8 H-1	1446.081	Grooved pin dia. 4 x 20	1							
10 A-1	3126.166	Retaining flange	1							
10 B-1	2142.058	Spring	10							
10 H-1	3126.153	Locking ring	1							
	<b>3184.387</b>	<b>Kit assembly gaskets for shaft seal SMC100</b>		1	1	1	1	1	1	1
10 D-1	1331.568	O-ring 75.79 x 3.53	1							
10 G-1	1331.697	O-ring 82.14 x 3.53	1							
10 J-1	1413.329	Cylinder screw M5 x 16	4							
8 B-1	2353.005	Gasket for cover	1							
	<b>3188.029</b>	<b>Service kit shaft seal SMC 100</b>		1	1	1	1	1	1	1
10 D-1	1331.568	O-ring 75.79 x 3.53	1							
10 E-1	3126.167	Slide ring, cast iron	1							
10 F-1	3126.168	Slide ring, carbon	1							
10 G-1	1331.697	O-ring 82.14 x 3.53	1							
10 J-1	1413.329	Cylinder screw M5 x 16	4							
8 B-1	2353.005	Gasket for cover	1							

Pos. no	Part no.	Description	Kit Qty.	Compressor						
				SMC					TSMC	
				104	106	108	112	116	108	116
		<b>Oil filter</b>								
9 B-1	<b>2311.075</b>	Nipple		1	1	1				
		<b>Oil filter kit</b>								
	<b>3188.111</b>	<b>Gasket kit oil change only for SMC 100 Mk4</b>		1	1	1	1	1	1	1
1 C-1	1331.543	O-ring 52.07 x 2.62	1							
3 C-1	2353.189	Gasket for top and side cover	1							
3 D-1	1331.594	O-ring 266.29 x 3.53	1							
9 A-1	1517.153	Oil filter	1							
		<b>Unloading cylinder</b>								
	<b>3135.149</b>	<b>Unloading cylinder complete L=75 S=21.5</b>		1	1	1	2	2		1
12 A-1	3135.147	Unloading cylinder	1							
12 B-1	3135.034	Piston	1							
12 C-1	3135.041	Piston rod 75 mm	1							
12 D-1	2314.025	Threaded plug	1							
12 E-1	2356.130	Gasket	1							
12 F-1	1437.155	Seeger ring	1							
12 G-1	2145.004	Spring guide	1							
12 H-1	3135.057	Spring retainer	1							
12 J-1	2142.056	Spring outer	1							
12 J-2	2142.055	Spring inner	1							
12 K-1	1437.105	Benzing ring dia. 9 mm	1							
12 K-2	1437.103	Benzing ring dia. 7 mm	1							
	<b>3135.150</b>	<b>Unloading cylinder complete L=100 S=46.5</b>		1	1	1	2	2	1	1
12 A-1	3135.147	Unloading cylinder	1							
12 B-1	3135.034	Piston	1							
12 C-2	3135.042	Piston rod 100 mm	1							
12 D-1	2314.025	Threaded plug	1							
12 E-1	2356.130	Gasket	1							
12 F-1	1437.155	Seeger ring	1							
12 G-1	2145.004	Spring guide	1							
12 H-1	3135.057	Spring retainer	1							
12 J-1	2142.056	Spring outer	1							
12 J-2	2142.055	Spring inner	1							
12 K-1	1437.105	Benzing ring dia. 9 mm	1							
12 K-2	1437.103	Benzing ring dia. 7 mm	1							
	<b>3135.151</b>	<b>Unloading cylinder complete L=125 S=71.5</b>			1	1	2	2	1	2
12 A-1	3135.147	Unloading cylinder	1							
12 B-1	3135.034	Piston	1							
12 C-3	3135.043	Piston rod 125 mm	1							
12 D-1	2314.025	Threaded plug	1							
12 E-1	2356.130	Gasket	1							
12 F-1	1437.155	Seeger ring	1							
12 G-1	2145.004	Spring guide	1							
12 H-1	3135.057	Spring retainer	1							
12 J-1	2142.056	Spring outer	1							

Pos. no	Part no.	Description	Kit Qty.	Compressor						
				SMC					TSMC	
				104	106	108	112	116	108	116
12 J-2	2142.055	Spring inner	1							
12 K-1	1437.105	Benzing ring dia. 9 mm	1							
12 K-2	1437.103	Benzing ring dia. 7 mm	1							
	<b>3135.152</b>	<b>Unloading cylinder complete L=150 S=96.5</b>				1		2	1	2
12 A-1	3135.147	Unloading cylinder	1							
12 B-1	3135.034	Piston	1							
12 C-4	3135.044	Piston rod 150 mm	1							
12 D-1	2314.025	Threaded plug	1							
12 E-1	2356.130	Gasket	1							
12 F-1	1437.155	Seeger ring	1							
12 G-1	2145.004	Spring guide	1							
12 H-1	3135.057	Spring retainer	1							
12 J-1	2142.056	Spring outer	1							
12 J-2	2142.055	Spring inner	1							
12 K-1	1437.105	Benzing ring dia. 9 mm	1							
12 K-2	1437.103	Benzing ring dia. 7 mm	1							
	<b>3135.161</b>	<b>Unloading cylinder complete HP L=82 S=24.5</b>							1	1
12 A-2	3135.148	Unloading cylinder	1							
12 B-1	3135.034	Piston	1							
12 C-5	3135.140	Piston rod 82 mm	1							
12 D-1	2314.025	Threaded plug	1							
12 E-1	2356.130	Gasket	1							
12 G-1	2145.004	Spring guide	1							
12 J-1	2142.056	Spring outer	1							
12 J-2	2142.055	Spring inner	1							
12 K-1	1437.105	Benzing ring dia. 9 mm	1							
12 K-2	1437.103	Benzing ring dia. 7 mm	1							
12 M-1	3135.105	Cover unloading cylinder TSMC 100	1							
12 N-1	2353.025	Gasket 66/51 x 1.0	1							
12 P-1	1433.100	Lock nut	1							
12 Q-1	1413.007	Hexagon head M4 x 16	6							
12 R-1	1331.539	O-ring 12.37 x 2.62	1							
	<b>3135.154</b>	<b>Unloading cylinder complete HP L=107 S=24.5</b>								1
12 A -2	3135.148	Unloading cylinder	1							
12 B-1	3135.034	Piston	1							
12 C-6	3135.141	Piston rod 107 mm	1							
12 D-1	2314.025	Threaded plug	1							
12 E-1	2356.130	Gasket	1							
12 G-1	2145.004	Spring guide	1							
12 J-1	2142.056	Spring outer	1							
12 J-2	2142.055	Spring inner	1							
12 K-1	1437.105	Benzing ring dia. 9 mm	1							
12 K-2	1437.103	Benzing ring dia. 7 mm	1							
12 M-1	3135.105	Cover unloading cylinder TSMC 100	1							
12 N-1	2353.025	Gasket 66/51 x 1.0	1							
12 P-1	1433.100	Lock nut	1							

Pos. no	Part no.	Description	Kit Qty.	Compressor							
				SMC					TSMC		
				104	106	108	112	116	108	116	
12 Q-1	1413.007	Hexagon head M4 x 16	6								
12 R-1	1331.539	O-ring 12.37 x 2.62	1								
	<b>3188.009</b>	<b>Gasket kit unloading cylinder</b>		2	3	4	6	8	4	8	
12 E-1	2356.130	Gasket 25/17 x 1.5	1								
12 N-1	2353.025	Gasket for cover (TSMC HP Only)	1								
12 R-1	1331.539	O-ring 12.37 x 2.62	1								
12 S-1	2354.023	Gasket 100 x 100 x 2	1								
12 L-1	<b>1424.192</b>	Hexagon head screw M10 x 30		8	12	16	24	32	16	32	
		<b>Frame for unloading</b>									
	<b>3184.216</b>	<b>Frame complete</b>		2	3	4	6	8	4	8	
13 A-1	3135.200	Suspension rod	1								
13 B-1	3135.201	Suspension rod	1								
13 C-1	3135.199	Cross piece	1								
13 D-1	3135.188	Cross piece	1								
13 E-1	1413.092	Countersunk screw	4								
	<b>3188.696</b>	<b>Service kit unloading frame SMC/HPC 100</b>		2	3	4	6	8	4	8	
12 K-1	1437.105	Benzing ring dia. 9 mm	1								
12 K-2	1437.103	Benzing ring dia. 7 mm	1								
12 P-1	1433.100	Lock nut (TSMC HP only)	1								
12 L-1	1413.372	Cylinder screw M10 x 30	4								
15 C-1	2145.036	Spring retainer	4								
15 D-1	2142.068	Spring	4								
15 E-1	2114.003	Washer for bearing cup	8								
	3188.009	Gasket kit unloading cylind. SMC 100	1								
		<b>Bracket for unloading mechanism</b>									
	<b>3184.358</b>	<b>Kit assembly bracket for unloading mechanism LP</b>		2	3	4	6	8	4	8	
14 A-1	3135.060	Bracket with pin	2								
14 B-1	2124.003	Spacing ring	4								
14 C-1	1424.154	Hexagon head screw M6 x 30	4								
14 D-1	1432.022	Spring washer	4								
		<b>Rocker for unloading mechanism</b>									
	<b>3184.484</b>	<b>Kit assembly rocker for unloading mechanism LP</b>		2	3	4	6	8	3	6	
15 A-1	3135.208	Rocker	4								
15 B-1	3135.210	Spacing ring	4								
	<b>3184.485</b>	<b>Kit assembly rocker for unloading mechanism HP</b>							1	2	
15 A-1	3135.208	Rocker	4								
15 B-2	3135.211	Spacing ring	4								



Pos. no	Part no.	Description	Kit Qty.	Compressor						
				SMC					TSMC	
				104	106	108	112	116	108	116
		<b>Crankshaft - all without certificate</b>								
16 A-1	<b>3121.409</b>	Crankshaft SMC/ HPC 104S MK4 complete (After Oct. 2006)		1						
16 A-2	<b>3121.410</b>	Crankshaft SMC/ HPC 106S MK4 complete (After Oct.2006)			1					
16 A-3	<b>3121.411</b>	Crankshaft SMC/ TSMC/HPC 108S MK4 complete (After Oct.2006)				1			1	
16 A-4	<b>3121.277</b>	Crankshaft SMC 104L MK4 complete		1						
16 A-5	<b>3121.280</b>	Crankshaft SMC 106L MK4 complete			1					
16 A-6	<b>3121.283</b>	Crankshaft SMC 108L MK4 complete				1			1	
16 A-7	<b>3121.270</b>	Crankshaft SMC 112S MK4 complete					1			
16 A-8	<b>3121.274</b>	Crankshaft SMC 116S MK4 complete						1		1
16 A-9	<b>3121.286</b>	Crankshaft SMC 112L MK4 complete					1			
16 A-10	<b>3121.289</b>	Crankshaft SMC 116L MK4 complete						1		1
16 A-11	<b>3121.243</b>	Crankshaft SMC 104E MK4 complete		1						
16 A-12	<b>3121.246</b>	Crankshaft SMC 106E MK4 complete			1					
16 A-13	<b>3121.249</b>	Crankshaft SMC 108E MK4 complete				1				
16 A-14	<b>3121.252</b>	Crankshaft SMC 112E MK4 complete					1			
16 A-15	<b>3121.255</b>	Crankshaft SMC 116E MK4 complete						1		1
16 F-1	<b>1413.260</b>	Plug M12 S-type		1	1	1	4	4	1	4
16 F-2	<b>1343.141</b>	Plug 1/4" L-type		3	3	3	4	5	3	5
		<b>Connecting rod</b>								
17	<b>3123.137</b>	<b>Connecting rod complete w/o certificate T/SMC 100</b>		4	6	8	12	16	6	12
17-1	3123.136	Conrod bare	1							
17 A-1	2133.025-H	Half-section bearing, metal - polymer	2							
17 B-1	2132.004	Bushing for piston pin	1							
17 C-1	2111.068	Bolt for connecting rod	2							
17 D-1	1433.116	Lock nut	2							
17	<b>3123.1006</b>	<b>Connecting rod complete w/o certificate TSMC 100</b>							2	4
17-2	3123.1005	Conrod bare	1							
17 A-1	2133.025-H	Half-section bearing, metal - polymer	2							
17 B-2	1511.275	Needle bearing for piston pin	1							
17 C-1	2111.068	Bolt for connecting rod	2							
17 D-1	1433.116	Lock nut	2							
		<b>Piston</b>								
18-1	<b>3124.002</b>	<b>Piston with pin and rings S</b>		4	6	8	12	16	8	12
18 A-1	3125.084	Piston pin	1							
18 B-1	3125.130	Piston ring	2							
18 C-1	3125.065	Oil scraper ring	1							
18 D-1	1437.150	Seeger ring dia.40	2							
18-2	<b>3124.052</b>	<b>Piston with pin and rings L</b>		4	6	8	12	16	8	12
18 A-1	3125.084	Piston pin	1							
18 B-1	3125.130	Piston ring	2							
18 C-1	3125.065	Oil scraper ring	1							
18 D-1	1437.150	Seeger ring dia.40	2							

Pos. no	Part no.	Description	Kit Qty.	Compressor							
				SMC					TSMC		
				104	106	108	112	116	108	116	
18-3	<b>3124.065</b>	<b>Piston with pin and rings E</b>		4	6	8	12	16	8	12	
18 A-1	3125.084	Piston pin	1								
18 B-1	3125.130	Piston ring	2								
18 C-1	3125.065	Oil scraper ring	1								
18 D-1	1437.150	Seeger ring dia.40	2								
	<b>3188.028</b>	<b>Service kit pair of piston rings</b>		2	3	4	6	8	4	8	
18 B-1	3125.130	Piston ring	4								
18 C-1	3125.065	Oil scraper ring	2								
	<b>3188.718</b>	<b>Service kit half section bearings</b>		2	3	4	6	8	4	8	
17 A-1	2133.025-H	Half-section bearing metal - polymer	4								
17 D-1	1433.116	Lock nut	4								
	<b>3188.089</b>	<b>Service kit piston pins LP</b>		2	3	4	6	8	3	6	
17 B-1	2132.004	Bushing for piston pin	2								
17 C-1	2111.068	Bolt for connecting ring	4								
18 A-1	3125.084	Piston pin	2								
18 D-1	1437.150	Seeger ring dia.40	4								
	<b>3188.721</b>	<b>Service kit pair of connecting rod bearings LP</b>		2	3	4	6	8	3	6	
	3188.089	Service kit piston pins LP	1								
	3188.718	Service kit half section bearings	1								
	<b>3188.097</b>	<b>Service kit piston pins HP</b>							2	4	
17 B-2	1511.275	Needle bearing	1								
17 C-1	2111.068	Bolt for connecting rod	2								
18 A-1	3125.084	Piston pin	1								
18 D-1	1437.150	Seeger ring dia.40	2								
	<b>3188.722</b>	<b>Service kit pair of connecting rod bearings HP</b>							1	2	
	3188.718	Service kit half section bearings	1								
	3188.097	Service kit piston pins HP	2								
	<b>3184.437</b>	<b>Kit assembly small end bearing</b>		2	3	4	6	8			
18 D-1	1437.150	Seeger ring dia. 40	4								
17 C-1	2111.068	Bolt for connecting rod	4								
17 B-1	2132.004	Bushing for piston pin	2								

<b>Selection of SUCTION valve SMC 100</b>					
Refrigerant	Conditions	Valve type	Complete cylinder liner part no. Suction valve retaining plate part no.		
R717	TE < 0°C	Model 1	SMC 100 S+L	3112-111	3132-105
			SMC 100 E	3112-112	
	TE ≥ 0°C	Model 4	SMC 100 S+L	3112-116	3132-110
			SMC 100 E	3112-117	
R134a	TE < -30°C	Model 2	SMC 100 S+L	3112-086	3132-095
	TE ≥ -30°C	Model 3	SMC 100 S+L	3112-109	3132-109
R22	TE < -20°C	Model 2	SMC 100 S+L	3112-086	3132-095
	TE ≥ -20°C	Model 3	SMC 100 S+L	3112-109	3132-109
R407C	TE < -15°C	Model 2	SMC 100 S+L	3112-086	3132-095
	TE ≥ -15°C	Model 3	SMC 100 S+L	3112-109	3132-109
R404A, R507	TE < -45°C	Model 2	SMC 100 S+L	3112-086	3132-095
	TE ≥ -45°C	Model 3	SMC 100 S+L	3112-109	3132-109
R290	TE < 0°C	Model 2	SMC 100 S+L	3112-086	3132-095
	TE ≥ 0°C	Model 3	SMC 100 S+L	3112-109	3132-109
R600	TE < 45°C	Model 2	SMC 100 S+L	3112-086	3132-095
	TE ≥ 45°C	Model 3	SMC 100 S+L	3112-109	3132-109
R600a	TE < 30°C	Model 2	SMC 100 S+L	3112-086	3132-095
	TE ≥ 30°C	Model 3	SMC 100 S+L	3112-109	3132-109
R1270	TE < -5°C	Model 2	SMC 100 S+L	3112-086	3132-095
	TE ≥ -5°C	Model 3	SMC 100 S+L	3112-109	3132-109



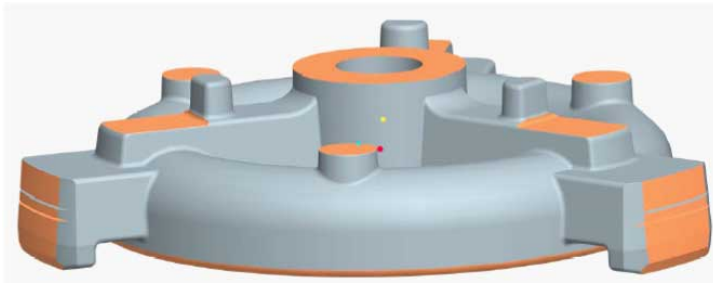
One small groove indicates "Model 1"  
 Two small grooves indicate "Model 2"  
 Three small grooves indicate "Model 3"  
 Four small grooves indicate "Model 4"

Pos. no	Part no.	Description	Kit Qty.	Compressor						
				SMC					TSMC	
				104	106	108	112	116	108	116
		<b>Cylinder liner</b>								
19-1	<b>3112.111</b>	<b>Cylinder liner S and L, with suction valve, Model 1</b>		4	6	8	12	16	6	12
19 A-1	3112.065	Cylinder liner S and L	1							
19 B-1	3135.054	Unloading ring with pins S and L	1							
19 C-1	2114.001	Washer dia 8/4.3 x 0.5	6							
19 D-1	2142.034	Spring for unloading ring	6							
19 E-1	2142.048	Tension spring	1							
19 F-1	3131.021LL	Ring plate	1							
19 G-1	2141.055	Helical spring	6							
19 H-1	3132.105	Suction valve retaining plate, Model 1	1							
19 J-1	3134.008	Guide ring for discharge valve	1							
19 N-1	1413.343	Cylinder screw M6 x 30	6							
19 T-1	2353.140	Gasket	1							
19-3	<b>3112.113</b>	<b>Cylinder liner S and L (high stage on TSMC), with suction valve, Model 1</b>							2	4
19-1	3112.111	Cylinder liner S and L with suction valve, Model 1	1							
19 M-1	1331.577	O-ring 107.54 x 3.53	1							
19-5	<b>3112.112</b>	<b>Cylinder liner E, with suction valve, Model 1</b>		4	6	8	12	16	6	12
19 A-2	3112.080	Cylinder liner E	1							
19 B-2	3135.173	Unloading ring with pins E	1							
19 C-1	2114.001	Washer dia 8/4.3 x 0.5	6							
19 D-1	2142.034	Spring for unloading ring	6							
19 E-1	2142.048	Tension spring	1							
19 F-1	3131.021LL	Ring plate	1							
19 G-1	2141.055	Helical spring	6							
19 H-1	3132.105	Suction valve retaining plate, Model 1	1							
19 J-1	3134.008	Guide ring for discharge valve	1							
19 N-1	1413.343	Cylinder screw M6 x 30	6							
19 T-1	2353.140	Gasket	1							
19-6	<b>3112.114</b>	<b>Cylinder liner E (high stage on TSMC), with suction valve, Model 1</b>							2	4
19-5	3112.112	Cylinder liner E with suction valve, Model 1	1							
19 M-1	1331.577	O-ring 107.54 x 3.53	1							
19-2	<b>3112.086</b>	<b>Cylinder liner S and L, with suction valve, Model 2</b>		4	6	8	12	16	6	12
19 A-1	3112.065	Cylinder liner S and L	1							
19 B-1	3135.054	Unloading ring with pins S and L	1							
19 C-1	2114.001	Washer dia 8/4.3 x 0.5	6							
19 D-1	2142.034	Spring for unloading ring	6							
19 E-1	2142.048	Tension spring	1							
19 F-1	3131.021LL	Ring plate	1							
19 G-1	2141.055	Helical spring	6							
19 H-2	3132.095	Suction valve retaining plate, Model 2	1							
19 J-1	3134.008	Guide ring for discharge valve	1							

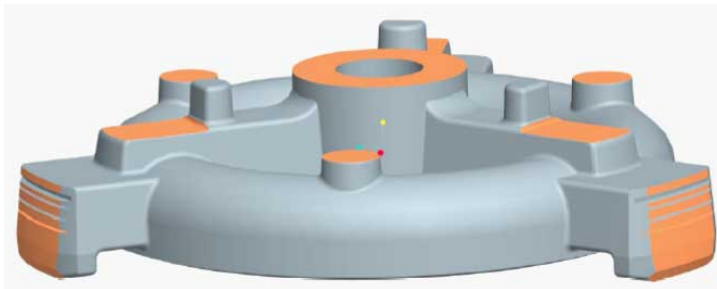
Pos. no	Part no.	Description	Kit Qty.	Compressor						
				SMC			TSMC			
				104	106	108	112	116	108	116
19 N-1	1413.343	Cylinder screw M6 x 30	6							
19 T-1	2353.140	Gasket	1							
19-4	<b>3112.088</b>	<b>Cylinder liner S and L (high stage on TSMC), with suction valve, Model 2</b>							2	4
19-2	3112.086	Cylinder liner S and L with suction valve, Model 2	1							
19 M-1	1331.577	O-ring 107.54 x 3.53	1							
19-1	<b>3112.109</b>	<b>Cylinder liner S and L, with suction valve, Model 3</b>		4	6	8	12	16	8	16
19 A-1	3112.065	Cylinder liner S and L	1							
19 B-1	3135.054	Unloading ring with pins S and L	1							
19 C-1	2114.001	Washer dia 8/4.3 x 0.5	6							
19 D-1	2142.034	Spring for unloading ring	6							
19 E-1	2142.048	Tension spring	1							
19 F-1	3131.021	Ring plate	1							
19 G-1	2141.055	Helical spring	12							
19 H-3	3132.109	Suction valve retaining plate, Model 3	1							
19 J-1	3134.008	Guide ring for discharge valve	1							
19 N-1	1413.343	Cylinder screw M6 x 30	6							
19 T-1	2353.140	Gasket	1							
19 M-1	<b>1331.577</b>	O-ring 107.54 x 3.53							2	4
	<b>3112.116</b>	<b>Cylinder liner S and L, with suction valve, Model 4</b>		4	6	8	12	16		
19 A-1	3112.065	Cylinder liner S and L	1							
19 B-1	3135.054	Unloading ring with pins S and L	1							
19 C-1	2114.001	Washer dia 8/4.3 x 0.5	6							
19 D-1	2142.034	Spring for unloading ring	6							
19 E-1	2142.048	Tension spring	1							
19 F-1	3131.021LL	Ring plate	1							
19 G-1	2141.055	Helical spring	6							
19 H-4	3132.110	Suction valve retaining plate, Model 4	1							
19 J-1	3134.008	Guide ring for discharge valve	1							
19 N-1	1413.343	Cylinder screw M6 x 30	6							
19 N	1437.067	Lock washer M6	6							
19 T-1	2353.140	Gasket	1							
	<b>3112.117</b>	<b>Cylinder liner E, with suction valve, Model 4</b>		4	6	8	12	16		
19 A-2	3112.080	Cylinder liner E	1							
19 B-2	3135.173	Unloading ring with pins E	1							
19 C-1	2114.001	Washer dia 8/4.3 x 0.5	6							
19 D-1	2142.034	Spring for unloading ring	6							
19 E-1	2142.048	Tension spring	1							
19 F-1	3131.021LL	Ring plate	1							
19 G-1	2141.055	Helical spring	6							
19 H-4	3132.110	Suction valve retaining plate, Model 4	1							
19 J-1	3134.008	Guide ring for discharge valve	1							
19 N-1	1413.343	Cylinder screw M6 x 30	6							
19 T-1	2353.140	Gasket	1							
	<b>3184.361</b>	<b>Kit assembly springs for unloading ring</b>		2	3	4	6	8	4	8

Pos. no	Part no.	Description	Kit Qty.	Compressor						
				SMC					TSMC	
				104	106	108	112	116	108	116
19 C-1	2114.001	Washer dia 8/4.3 x 0.5	12							
19 D-1	2142.034	Service kit pair of piston rings	12							
19 E-1	2142.048	Tension spring	2							
	<b>3188.039</b>	<b>Service kit pair of unloading rings SMC 100 S/L</b>								
19 B-1	3135.054	Unloading ring with pins S and L	2							
	3188.010	Gasket kit pair of cylinder liners SMC 100	1							
	3184.361	Kit assembly springs for unloading ring	1							
	<b>3188.040</b>	<b>Service kit pair of unloading rings SMC 100 E</b>								
19 B-2	3135.173	Unloading ring with pins E	2							
	3188.010	Gasket kit pair of cylinder liners SMC 100	1							
	3184.361	Kit assembly springs for unloading ring	1							

<b>Selection of DISCHARGE valve SMC 100</b>				
<b>Refrigerant</b>	<b>Conditions</b>	<b>Valve type</b>	<b>Complete discharge valve part no.</b>	<b>Discharge valve retaining plate part no.</b>
R717	TC < 15°C	Model 1	3136-109	3132-097
	15°C ≤ TC < 40°C	Model 2	3136-110	3132-096
	TC ≥ 40°C	Model 6	3136-111	3132-111
R134a	TC < 20°C	Model 3	3136-093	3132-099
	20° ≤ TC < 40°C	Model 4	3136-092	3132-098
	TC ≥ 40°C	Model 5	3136-108	3132-108
R22	TC < 15°C	Model 3	3136-093	3132-099
	15° ≤ TC < 40°C	Model 4	3136-092	3132-098
	TC ≥ 40°C	Model 5	3136-108	3132-108
R407C	TC < 10°C	Model 3	3136-093	3132-099
	10° ≤ TC < 35°C	Model 4	3136-092	3132-098
	TC ≥ 35°C	Model 5	3136-108	3132-108
R404A, R507	TC < -5°C	Model 3	3136-093	3132-099
	-5° ≤ TC < 15°C	Model 4	3136-092	3132-098
	TC ≥ 15°C	Model 5	3136-108	3132-108
R290	TC < 40°C	Model 3	3136-093	3132-099
	TC ≥ 40°C	Model 4	3136-092	3132-098
R600	TC < 80°C	Model 3	3136-093	3132-099
	TC ≥ 80°C	Model 4	3136-092	3132-098
R600a	TC < 70°C	Model 3	3136-093	3132-099
	70° ≤ TC < 100°C	Model 4	3136-092	3132-098
	TC ≥ 100°C	Model 5	3136-108	3132-108
R1270	TC < 0°C	Model 2	3136-090	3132-096
	0° ≤ TC < 35°C	Model 3	3136-093	3132-099
	TC ≥ 35°C	Model 4	3136-092	3132-098



One small groove indicates "Model 1"  
Two small grooves indicate "Model 2"  
Three small grooves indicate "Model 6"



One large groove and one small groove indicate "Model 3"  
One large groove and two small grooves indicate "Model 4"  
One large groove and three small grooves indicate "Model 5"



Pos. no	Part no.	Description	Kit Qty.	Compressor						
				SMC					TSMC	
				104	106	108	112	116	108	116
		<b>Discharge valve</b>								
20 1	<b>3136.109</b>	<b>Discharge valve, Model 1</b>		4	6	8	12	16	6	12
20 A-2	3133.031	Discharge valve seat	1							
20 B-1	3132.097	Retaining plate, Model 1	1							
20 C-1	3131.015LL	Ring plate	1							
20 E-1	1424.240	Hexagon head screw M14 x 35	1							
20 E	1437.066	Lock washer	1							
20 G-1	2141.055	Helical spring	6							
20 2	<b>3136.110</b>	<b>Discharge valve, Model 2</b>		4	6	8	12	16	2	4
20 A-2	3133.031	Discharge valve seat	1							
20 B-2	3132.096	Retaining plate, Model 2	1							
20 C-1	3131.015LL	Ring plate	1							
20 E-1	1424.240	Hexagon head screw M14 x 35	1							
20 E	1437.066	Lock washer	1							
20 G-1	2141.055	Helical spring	8							
20 3	<b>3136.093</b>	<b>Discharge valve, Model 3</b>		4	6	8	12	16	6	12
20 A-1	3133.030	Discharge valve seat	1							
20 B-3	3132.099	Retaining plate, Model 3	1							
20 C-1	3131.015LL	Ring plate	1							
20 E-1	1424.240	Hexagon head screw M14 x 35	1							
20-E	1437.066	Lock washer	1							
20 G-1	2141.055	Helical spring	6							
20 4	<b>3136.092</b>	<b>Discharge valve, Model 4</b>		4	6	8	12	16	2	4
20 A-1	3133.030	Discharge valve seat	1							
20 B-4	3132.098	Retaining plate, Model 4	1							
20 C-1	3131.015LL	Ring plate	1							
20 E-1	1424.240	Hexagon head screw M14 x 35	1							
20-E	1437.066	Lock washer	1							
20 G-1	2141.055	Helical spring	12							
20 5	<b>3136.108</b>	<b>Discharge valve, Model 5</b>		4	6	8	12	16		
20 A-1	3133.030	Discharge valve seat	1							
20 B-5	3132.108	Retaining plate, Model 5	1							
20 C-1	3131.015LL	Ring plate	1							
20 E-1	1424.240	Hexagon head screw M14 x 35	1							
20 E	1437.066	Lock washer	1							
20 G-1	2141.055	Helical spring	16							
20 6	<b>3136.111</b>	<b>Discharge valve, Model 6</b>		4	6	8	12	16		
20 A-2	3133.031	Discharge valve seat	1							
20 B-6	3132.111	Retaining plate, Model 6	1							
20 C-1	3131.015LL	Ring plate	1							
20 E-1	1424.240	Hexagon head screw M14 x 35	1							
20 E	1437.066	Lock washer	1							
20 G-1	2141.055	Helical spring	16							
		<b>Discharge valve kit</b>								
	<b>3188.010</b>	<b>Service kit pair of cylinder liners SMC 100</b>		2	3	4	6	8	4	8
19 K-1	2356.111	Gasket for cylinder liner 0.5 mm	2							
19 K-2	2356.233	Gasket for cylinder liner 0.8 mm	2							
19 M-1	1331.577	O-ring 107.55 x 3.53 (TSMC HP only)	2							

Pos. no	Part no.	Description	Kit Qty.	Compressor						
				SMC					TSMC	
				104	106	108	112	116	108	116
19 T-1	2353.140	Gasket dia. 163/141 x 0.2 mm	2							
	<b>3188.027LL</b>	<b>Service kit ring plates</b>		2	3	4	6	8	4	8
19 F-1	3131.021LL	Ring plate	2							
19 G-1	2141.055	Helical spring (Qty. for Model 3)	24							
20 C-1	3131.015LL	Ring plate	2							
20 G-1	2141.055	Helical spring (Qty. for Model 5)	32							
	3188.010	Service kit pair of cylinder liners SMC 100 S/L	1							

Pos. no	Part no.	Description	Kit Qty.	Compressor						
				SMC					TSMC	
				104	106	108	112	116	108	116
	<b>3188.220</b>	<b>Kit assembly valve springs</b>								
19 G-1/ 20 G-1	2141.055	Helical spring	20							
21 A-1	<b>2142.063</b>	Spring for safety head S and L		4	6	8	12	16	8	16
21 A-2	<b>2142.064</b>	Spring for safety head E		4	6	8	12	16	8	16
		<b>Oil pressure valve</b>								
		<b>Oil pressure valve kit</b>								
	<b>3184.362</b>	<b>Kit assembly oil pressure valve</b>		1	1	1	1	1	1	1
22 A-1	3142.150	Oil pressure valve	1							
22 B-1	2354.075	Gasket (also included in Gasket kit 3188.141)	1							
22 C-1	1424.215	Hexagon head screw M12 x 35	2							
		<b>Oil charging valve</b>								
		<b>Oil charging valve kit</b>								
	<b>3184.363</b>	<b>Kit assembly oil charging valve</b>		1	1	1	1	1	1	1
23 A-1	1361.118	Needle valve	1							
23 B-1	2311.073	Threaded reduction nipple	1							
23 C-1	2313.035	Socket	1							
23 D-1	2356.283	Gasket 19/14 x 4.0	1							
23 E-1	2313.027	Nut	1							
23 F-1	2356.123	Gasket 18/10 x 1.5	1							
23 G-1	1349.051	Male stud coupling	1							
23 H-1	2356.140	Gasket 34/27 x 1.5	1							
23 J-1	3141.175	Bend	1							
	<b>3188.138</b>	<b>Gasket kit oil charging valve</b>		1	1	1	1	1	1	1
23 D-1	2356.283	Gasket 19/14	1							
23 F-1	2356.123	Gasket 18/10	1							
23 H-1	2356.140	Gasket 34/27 x 1.5	1							
23	1377.463	Packing gland	1							
		<b>By-pass valve</b>								
24-1	<b>3137.033</b>	By pass valve dia 20, 22 BAR							1	
24-2	<b>3137.010</b>	By pass valve dia 20, 24 BAR							1	
24-3	<b>3137.046</b>	By pass valve dia 28, 14 BAR							1	2
24-4	<b>3137.007</b>	By pass valve dia 28, 22 BAR		1	1	1	2	2		1
24-5	<b>3137.009</b>	By pass valve dia 28, 24 BAR		1	1	1	2	2		1
		<b>By-pass valve kit</b>								
	<b>3188.020</b>	<b>Gasket kit by pass valve ø 20</b>							1	
24 B-1	1331.560	O-ring 44.04 x 3.53	1							
24 C-1	1331.563	O-ring 56.74 x 3.53	1							
	<b>3188.019</b>	<b>Gasket kit by pass valve ø 28</b>		1	1	1	1	1	1	3
24 B-2	1331.561	O-ring 50,39 x 3.53	1							
24 C-2	1331.566	O-ring 66.27 x 3.53	2							
24 D-1	<b>1424.168</b>	Screw M8x 25					4	4		
24 D-2	<b>1424.173</b>	Screw M8x 50								4
24 E-1	<b>1437.023</b>	Washer								4
24 F-2	<b>2469.002</b>	Distance piece TSMC 116								1

Pos. no	Part no.	Description	Kit Qty.	Compressor						
				SMC					TSMC	
				104	106	108	112	116	108	116
		<b>Stop valves</b>								
25-1	<b>3447.603</b>	Complete stop valve SVA DN50							1	
25-2	<b>1361.177</b>	Complete stop valve SVA DN65		1	1	1			1	1
25-5	<b>1361.178</b>	Complete stop valve SVA DN80		1	1	1			1	
25-3	<b>1361.179</b>	Complete stop valve SVA DN100			1	1	1	1	1	1
25-4	<b>1361.180</b>	Complete stop valve SVA DN125					1	1		1
25 AV-1	<b>2333.071</b>	Intermediate flange					1	1		1
		<b>Hand wheel</b>								
25 S-1	<b>1365.091</b>	Hand wheel DN50/65 (Incl. Screw+washer)		1	1	1			1	1
25 S-2	<b>1365.092</b>	Hand wheel DN80 (Incl. Screw+washer)		1	1	1			1	
25 S-3	<b>1365.093</b>	Hand wheel DN100 (Incl. Screw+washer)			1	1	1	1	1	1
25-S-4	<b>1365.094</b>	Hand wheel DN125 (Incl. Screw+washer)					1	1		1
		<b>Spare Parts kit stop valve 50</b>							1	
25-1	1377.472	Inspection Kit SVA DN50	1							
25-1	1377.2013	Repair Kit SVA DN50	1							
25-1	1377.419	Overhaul Kit SVA DN50	1							
		<b>Spare Parts kit stop valve 65</b>		1	1	1			1	1
25-2	1377.466	Inspection Kit SVA DN65	1							
25-2	1377.2014	Repair Kit SVA DN65	1							
25-2	1377.420	Overhaul Kit SVA DN65	1							
		<b>Spare Parts kit stop valve 80</b>		1	1	1			1	
25-5	1377.473	Inspection Kit SVA DN80	1							
25-5	1377.2015	Repair Kit SVA DN80	1							
25-5	1377.421	Overhaul Kit SVA DN80	1							
		<b>Spare Parts kit stop valve 100</b>			1	1	1	1	1	1
25-3	1377.467	Inspection Kit SVA DN100	1							
25-3	1377.483	Repair Kit SVA DN100	1							
25-3	1377.422	Overhaul Kit SVA DN100	1							
		<b>Spare Parts kit stop valve 125</b>					1	1		1
25-4	1377.2016	Inspection Kit SVA DN125	1							
25-4	1377.2005	Repair Kit SVA DN125	1							
25-4	1377.2004	Overhaul Kit SVA DN125	1							
25 V-1	<b>1437.030</b>	Spring washer ø14		4	4	4			4	4
25 V-1	<b>1437.027</b>	Spring washer ø16		4	4	4	10	10		10
25 Z-1	<b>1424.242</b>	Screw valve/compr. M14 x 45 for DN50 valve							8	4
25 Z-2	<b>1424.242</b>	Screw valve/compr. M14 x 45 for DN65 valve		4	4	4			8	10
25 Z-3	<b>1424.102</b>	Screw valve/compr. M16 x 45 for DN80/DN100/DN125 valve		4	4	4	6	6	4	6
25 Z-4	<b>1424.104</b>	Hexagon head screw M16 x 55		4	4	4	10	10	4	10
	<b>1432.067</b>	Nut M16					6	6	6	6
25 AG-1	<b>1331.571</b>	O-ring 85.32 x 3.53 valve DN50/DN65		1	1	1			1	1
25 AG-2	<b>1331.581</b>	O-ring 120.24 x 3.53 valve DN80/DN100		1	1	1	1	1	1	1
25 AG-3	<b>1331.585</b>	O-ring 142.47 x 3.53 Valve DN125					2	2		2

Pos. no	Part no.	Description	Kit Qty.	Compressor						
				SMC					TSMC	
				104	106	108	112	116	108	116
		<b>Suction Pressure and Oil Pressure gauge</b>								
30 A-1	<b>1541.290</b>	Pressure gauge, -1/+12 Bar, R717		1	1	1	1	1	1	1
30 A-2	<b>1541.288</b>	Pressure gauge, -1/+12 Bar, R407C and R507		1	1	1	1	1	1	1
30 A-3	<b>1541.289</b>	Pressure gauge, -1/+12 Bar, R22, R134A and R404A		1	1	1	1	1	1	1
30 A-4	<b>1541.332</b>	Pressure gauge, -1/+25 Bar, R410A and R744		1	1	1	1	1	1	1
		<b>Discharge Pressure gauge</b>								
31 A-1	<b>1541.313</b>	Pressure gauge, -1/+25 Bar, R717		1	1	1	1	1		
31 A-2	<b>1541.315</b>	Pressure gauge, -1/+25 Bar, R407C and R507		1	1	1	1	1		
31 A-3	<b>1541.316</b>	Pressure gauge, -1/+25 Bar, R22, R134A and R404A		1	1	1	1	1		
31 A-4	<b>1541.319</b>	Pressure gauge, -1/+40 Bar, R410A and R744		1	1	1	1	1		
31 A-5	<b>1541.307</b>	Pressure gauge, -1/+12 Bar, R717							1	1
31 A-6	<b>1541.331</b>	Pressure gauge, -1/+25 Bar, R407C and R507							1	1
31 A-7	<b>1541.306</b>	Pressure gauge, -1/+25 Bar, R22, R134A and R404A							1	1
31 C-1	<b>1412.350</b>	Screw for gauges M4 x 20		6	6	6	6	6	6	6
	<b>3188.021</b>	<b>Gasket kit pressure gauges</b>		1	1	1	1	1	1	1
30 B-1	3146.013	Gasket plate w. orifice dia.14/0.8 x 1.25	1							
30 C-1	2356.119	Gasket dia. 11/4 x 1.5	1							
31 B-1	3146.013	Gasket plate w. orifice dia.14/0.8 x 1.25	2							
		<b>Oil suction filter</b>								
		<b>Oil suction filter kit</b>								
	<b>3184.374</b>	<b>Kit assembly oil suction filter</b>		1	1	1	1	1	1	1
33 A-1	1517.156	Oil suction filter	1							
33 B-1	1349.131	Male stud coupling	1							
33 C-1	3141.177	Oil pipe suction	1							
33 D-1	1349.343	Flange connector, elbow 22mm pipe (CR-mat)	1							
33 E-1		Bolt M6x22, incl. in 1349.343 (33 D-1)								
		<b>Suction filter</b>								
		<b>Suction filter kit</b>								
	<b>3188.035</b>	<b>Service kit suction filter</b>		2	2	2			1	
34 A-1	3425.082	Suction filter open, complete	1							
	3188.011	Gasket kit suction filter	1							
	<b>3188.011</b>	<b>Gasket kit suction filter</b>		1	1	1				
34 D-1	1331.599	O-ring 75.57 x 5.33	2							
34 F-1	1331.573	O-ring 91.67 x 3.53	2							

Pos. no	Part no.	Description	Kit Qty.	Compressor						
				SMC					TSMC	
				104	106	108	112	116	108	116
	<b>3188.036</b>	<b>Service kit suction filter</b>							1	
34 A-2	3425.084	Suction filter open, complete TSMC108	1							
	3188.012	Gasket kit suction filter	1							
	<b>3188.012</b>	<b>Gasket kit suction filter</b>							1	
34 D-1	1331.599	O-ring 75.57 x 5.33	3							
34 F-1	1331.573	O-ring 91.67 x 3.53	1							
	<b>3188.037</b>	<b>Service kit suction filter</b>					2	2		1
34 A-1	3425.093	Suction filter open, complete T/SMC112-116	1							
	3188.013	Gasket kit suction filter	1							
	<b>3188.013</b>	<b>Gasket kit suction filter</b>					1	1		
34 D-1	1331.600	O-ring 104.14 x 5.33	2							
34 F-1	1331.581	O-ring 120.24 x 3.53	2							
	<b>3188.038</b>	<b>Service kit suction filter</b>								1
34 A-2	3425.095	Suction filter open, complete TSMC116	1							
	3188.014	Gasket kit suction filter	1							
	<b>3188.014</b>	<b>Gasket kit suction filter</b>								1
34 D-1	1331.600	O-ring 104.14 x 5.33	3							
34 F-1	1331.581	O-ring 120.24 x 3.53	1							
34 B-1	<b>3425.083</b>	Filter bag		2	2	2			2	
34 B-2	<b>3425.096</b>	Filter bag TSMC112-116					2	2		2
34 C-1	<b>3424.058</b>	Insert for filter bag		2	2	2			2	
34 C-2	<b>3424.061</b>	Insert for filter bag TSMC112-116					2	2		2
34 E-1	<b>3422.103</b>	Cover for suction filter		2	2	2			1	
34 E-2	<b>3422.114</b>	Cover for suction filter					2	2		1
34 G-1	<b>1424.217</b>	Hexagon head screw M12 x 40		8	8	8			4	
34 G-2	<b>1424.102</b>	Hexagon head screw M16 x 45					8	8		4
34 H-1	<b>1437.027</b>	Spring washer 27.4/16.2 x 3.5		8	8	8			4	
34 H-2	<b>1437.026</b>	Spring washer 21.2/13.2 x 2.5					8	8		4
		<b>Pipe system for oil return</b>								
	<b>3116.053</b>	<b>Oil draining set</b>		1	1	1	1	1	1	1
37 A-1	3141.179	Oil pipe for oil return	1							
37 B-1	3141.180	Oil pipe for oil return	1							
37 C-1	2124.001	Discharge ring	1							
37 D-1	2212.138	Clamp for oil pipe	1							
37 E-1	1436.033	Washer	1							
37 F-1	1424.153	Hex head bolt M6 x 25	1							
		<b>Discharge pipe oil system</b>								
38 A-1	<b>3141.176</b>	Discharge pipe oil system		1	1	1	1	1	1	1
38 C-1	<b>2333.024</b>	Connection for discharge pipe		1			1			
38 C-2	<b>2333.025</b>	Connection for discharge pipe			1					
38 C-3	<b>2333.026</b>	Connection for discharge pipe				1		1	1	1
38 H-1	<b>3141.114</b>	Discharge for oil pipe					1	1		1
38 J-1	<b>2213.150</b>	Support for oil pipe					1	1		1
38 K-1	<b>1424.189</b>	Hexagon head screw M10 x 16					2	2		2
38 L-1	<b>1437.027</b>	Spring washer					2	2		2

Pos. no	Part no.	Description	Kit Qty.	Compressor						
				SMC					TSMC	
				104	106	108	112	116	108	116
		<b>Discharge pipe oil system kit</b>								
	<b>3188.139</b>	<b>Gasket kit discharge pipe oil system</b>		1	1	1	1	1	1	1
38 M-1	1331.549	O-ring 21.82 x 3.53	1							
38 D-1	1331.549	O-ring 21.82 x 3.53	1							
38 E-1	1331.597	O-ring 29.51 x 5.33	1							
38 F-1	1331.549	O-ring 21.82 x 3.53	1							
38 G-1	1331.552	O-ring 26.58 x 3.53	1							
		<b>Analogous control and safety equipment</b>								
39 A-1	<b>3146.042</b>	Gauge panel		1	1	1	1	1	1	1
39 B-1	<b>1413.382</b>	Socket cap screw M10 x 60		2	2	2	2	2	2	2
39 C-1	<b>2213.142</b>	Console		1	1	1	1	1	1	1
39 D-1	<b>2213.143</b>	Bar for controls (4 Controls)		1	1	1	1	1		1
39 D-2	<b>2213.144</b>	Bar for controls (5 Controls)		1	1	1	1	1	1	1
39 D-3	<b>2213.145</b>	Bar for controls (6 Controls)		1	1	1	1	1	1	1
39 D-4	<b>2213.154</b>	Bar for controls (7 Controls)		1	1	1	1	1	1	1
39 J-1	<b>1413.330</b>	Socket cap screw M5 x 10		4	4	4	4	4	4	4
39 K-1	<b>1437.021</b>	Spring washer dia.9.2/5.1		4	4	4	4	4	4	4
		<b>Cooling water</b>								
40 A-1	<b>3185.230</b>	Set of hoses for cooling water SMC104		1						
40 A-2	<b>3185.231</b>	Set of hoses for cooling water SMC106			1					
40 A-3	<b>3185.232</b>	Set of hoses for cooling water SMC/TSMC 108				1			1	
40 A-4	<b>3185.235</b>	Set of hoses for cooling water SMC/TSMC 108 side cover only				1			1	
40 A-9	<b>3185.255</b>	Set of hoses for cooling water SMC112					1			
40 A-11	<b>3185.257</b>	Set of hoses for cooling water SMC 112 side cover only					1			
40 A-10	<b>3185.256</b>	Set of hoses for cooling water SMC/TSMC116						1		1
40 A-11	<b>3185.258</b>	Set of hoses for cooling water SMC/TSMC 116 side cover only						1		1
		<b>Purge valve</b>								
42 A-1	<b>1361.118</b>	Purge valve		1	1	1	1	1	2	2
42 B-1	<b>1349.078</b>	Threaded nipple		1	1	1	1	1	1	1
42 C-1	<b>1349.062</b>	Male stud coupling		1	1	1	1	1	1	2
42 E-1	<b>2313.045</b>	Nut		1	1	1	1	1	2	2
42 F-1	<b>2334.027</b>	Connection pipe with collar		1	1	1	1	1	2	2
42 G-1	<b>2356.123</b>	Gasket 18/10 x 1.5 (Included in gasket kit 3188.141)		2	2	2	2	2	4	4
42 H-1	<b>2313.027</b>	Nut		1	1	1	1	1	2	2
		<b>Pressure and temperature controls</b>								
		<b>Pressure controls for R717</b>								
45 A-1	<b>1373.125</b>	KP 5A		1	1	1	1	1	1	1
45 B-1	<b>1373.142</b>	KP 15A		1	1	1	1	1	1	1
45 C-1	<b>1373.162</b>	MP 15A		1	1	1	1	1	1	1
45	<b>1373.113</b>	KP 1A		1	1	1	1	1	1	1
45	<b>1373.132</b>	KP7ABS		1	1	1	1	1	2	2

Pos. no	Part no.	Description	Kit Qty.	Compressor						
				SMC					TSMC	
				104	106	108	112	116	108	116
		<b>Pressure controls for HFC</b>								
45 D-1	<b>1373.123</b>	KP 5		1	1	1	1	1	1	1
45 E-1	<b>1373.135</b>	KP 15		1	1	1	1	1	1	1
45 F-1	<b>1373.159</b>	MP 15		1	1	1	1	1	1	1
45	<b>1373.103</b>	KP 1		1	1	1	1	1	1	1
45	<b>1373.132</b>	KP7ABS		1	1	1	1	1	2	2
		<b>Temperature controls</b>								
45	<b>1373.043</b>	KP 98		1	1	1	1	1	1	1
45	<b>1373.044</b>	KP 77		1	1	1	1	1	1	1
45 J-1	<b>1377.171</b>	Phial pocket for temperature controls		1	1	1	1	1	1	1
45 K-1	2356.133	Gasket 27/21 x 1.5 (Included in gasket kit 3188.141)		1	1	1	1	1	1	1
		<b>Couplings</b>								
	<b>3188.222</b>	<b>Spare part set AMR Size 312</b>		1	1	1	1	1	1	1
	1524.339	Disc pack (pair)	1							
	1524.343	Hardware kit AMR Size 312	1							
	<b>1524.339</b>	<b>Disc pack (pair+ thin washers)</b>		1	1	1	1	1	1	1
48 A-1	1524.348	Disc pack size 312 single	2							
	1524.354	Ultra thin washer 312 AMR	16							
	<b>1524.343</b>	<b>Hardware kit AMR Size 312</b>		1	1	1	1	1	1	1
48 B-1	1524.165	Coupling bolt AMR 312	16							
48 C-1	1524.321	Washer steel	8							
48 D-1	1524.173	Lock nut	16							
48 E-1	1524.181	Washer	16							
	<b>3188.223</b>	<b>Spare part set AMR Size 350</b>		1	1	1	1	1	1	1
	1524.340	Disc pack (pair) AMR Size 350	1							
	1524.344	Hardware kit AMR Size 350	1							
	<b>1524.340</b>	<b>Disc pack (pair+ thin washers) AMR Size 350</b>		1	1	1	1	1	1	1
48 A-2	1524.349	Disc pack size 350 single	2							
	1524.355	Ultra thin washer 350 AMR	16							
	<b>1524.344</b>	<b>Hardware kit AMR Size 350</b>		1	1	1	1	1	1	1
48 B-2	1524.166	Coupling bolt AMR 350	16							
48 C-2	1524.322	Washer steel Size 350	8							
48 D-2	1524.174	Lock nut AMR/S52 Size 350	16							
48 E-2	1524.182	Washer AMR350	16							



Pos. no	Part no.	Description	Kit Qty.	Compressor						
				SMC					TSMC	
				104	106	108	112	116	108	116
		<b>Coupling AMR Size 312 &amp; 350</b>								
		<b>Motor hub for coupling AMR 312 &amp; 350</b>								
48 H-1	<b>1524.413</b>	Motor hub AMR 312 L=100 mm bore 48 mm		1	1	1	1	1	1	1
48 H-2	<b>1524.414</b>	Motor hub AMR 312 L=100 mm bore 55 mm		1	1	1	1	1	1	1
48 H-3	<b>1524.415</b>	Motor hub AMR 312 L=100 mm bore 60 mm		1	1	1	1	1	1	1
48 H-4	<b>1524.416</b>	Motor hub AMR 312 L=100 mm bore 65 mm		1	1	1	1	1	1	1
48 H-5	<b>1524.491</b>	Motor hub AMR 312 L=125 mm bore 60 mm		1	1	1	1	1	1	1
48 H-6	<b>1524.492</b>	Motor hub AMR 312 L=155 mm bore 65 mm		1	1	1	1	1	1	1
48 H-7	<b>1524.493</b>	Motor hub AMR 312 L=155 mm bore 75 mm		1	1	1	1	1	1	1
48 H-8	<b>1524.495</b>	Motor hub AMR 312 L=160 mm bore 80 mm		1	1	1	1	1	1	1
48 H-9	<b>1524.507</b>	Motor hub AMR 312 L=160 mm bore 90 mm		1	1	1	1	1	1	1
48 H-10	<b>1524.417</b>	Motor hub AMR 312 L=185 mm bore 60 mm		1	1	1	1	1	1	1
48 H-11	<b>1524.418</b>	Motor hub AMR 312 L=185 mm bore 65 mm		1	1	1	1	1	1	1
48 H-12	<b>1524.419</b>	Motor hub AMR 312 L=185 mm bore 70 mm		1	1	1	1	1	1	1
48 H-13	<b>1524.420</b>	Motor hub AMR 312 L=185 mm bore 75 mm		1	1	1	1	1	1	1
48 H-14	<b>1524.494</b>	Motor hub AMR 312 L=190 mm bore 75 mm		1	1	1	1	1	1	1
48 H-15	<b>1524.429</b>	Motor hub AMR 312/350 L=120 mm bore 65 mm		1	1	1	1	1	1	1
48 H-16	<b>1524.430</b>	Motor hub AMR 312/350 L=120 mm bore 70 mm		1	1	1	1	1	1	1
48 H-17	<b>1524.431</b>	Motor hub AMR 312/350 L=120 mm bore 75 mm		1	1	1	1	1	1	1
48 H-18	<b>1524.432</b>	Motor hub AMR 312/350 L=120 mm bore 80 mm		1	1	1	1	1	1	1
48 H-19	<b>1524.496</b>	Motor hub AMR 312/350 L=120 mm bore 100 mm		1	1	1	1	1	1	1
48 H-20	<b>1524.421</b>	Motor hub AMR 312/350 L=155 mm bore 65 mm		1	1	1	1	1	1	1
48 H-21	<b>1524.422</b>	Motor hub AMR 312/350 L=155 mm bore 70 mm		1	1	1	1	1	1	1
48 H-22	<b>1524.423</b>	Motor hub AMR 312/350 L=155 mm bore 75 mm		1	1	1	1	1	1	1
48 H-23	<b>1524.424</b>	Motor hub AMR 312/350 L=155 mm bore 80 mm		1	1	1	1	1	1	1
48 H-24	<b>1524.425</b>	Motor hub AMR 312/350 L=155 mm bore 85 mm		1	1	1	1	1	1	1
48 H-25	<b>1524.426</b>	Motor hub AMR 312/350 L=155 mm bore 90 mm		1	1	1	1	1	1	1
48 H-26	<b>1524.427</b>	Motor hub AMR 312/350 L=155 mm bore 95 mm		1	1	1	1	1	1	1
48 H-27	<b>1524.428</b>	Motor hub AMR 312/350 L=155 mm bore 100 mm		1	1	1	1	1	1	1

Pos. no	Part no.	Description	Kit Qty.	Compressor						
				SMC					TSMC	
				104	106	108	112	116	108	116
		<b>Compressor hub for coupling AMR 312</b>								
48 F-1	<b>1524.433</b>	Compressor hub for coupling AMR 312		1	1	1	1	1	1	1
48 J-1	<b>1526.137</b>	Locking assembly TLK 131 70x110		1	1	1	1	1	1	1
		<b>Compressor hub for coupling AMR 350</b>								
48 F-2	<b>1524.434</b>	Compressor hub for coupling AMR 350		1	1	1	1	1	1	1
48 J-1	<b>1526.137</b>	Locking assembly TLK 131 70x110		1	1	1	1	1	1	1
		<b>Coupling CFA Size 30</b>								
		<b>Motor hub for coupling CFA 30</b>								
48 H-21	<b>1524.385</b>	Motor hub CFA 30 Bore 48 mm		1	1	1	1	1	1	1
48 H-22	<b>1524.386</b>	Motor hub CFA 30 Bore 55 mm		1	1	1	1	1	1	1
48 H-23	<b>1524.387</b>	Motor hub CFA 30 Bore 60 mm		1	1	1	1	1	1	1
48 H-24	<b>1524.388</b>	Motor hub CFA 30 Bore 65 mm		1	1	1	1	1	1	1
		<b>Compressor hub for coupling CFA30</b>								
48 F-3	<b>1524.397</b>	Compressor hub for coupling CFA30		1	1	1	1	1	1	1
48 J-1	<b>1526.137</b>	Locking assembly TLK 131 70x110		1	1	1	1	1	1	1
48 K-1	<b>2159.003</b>	Flywheel CFA 30 (only SMC 104)		1						
	<b>3188.726</b>	<b>Spare part set CFA Size 30</b>		1	1	1	1	1	1	1
48 A-3	1524.400	Elastic element CFA 30	2							
48 L-1	1524.382	Radial bolt M16x55 mm with securing paste	6							
	1231.334	Copper grease	1							
48 G-3	<b>1524.403</b>	Intermediate part CFA 30 L = 104 mm		1	1	1	1	1	1	1
48 G-4	<b>1524.405</b>	Intermediate part CFA 30 L = 128 mm		1	1	1	1	1	1	1
48 M-1	<b>1524.384</b>	Pin bolt for CFA 30		6	6	6	6	6	6	6
		<b>Coupling CFA Size 90</b>								
		<b>Motor hub for coupling CFA 90</b>								
48 H-25	<b>1524.389</b>	Motor hub CFA 90 Bore 65 mm		1	1	1	1	1	1	1
48 H-26	<b>1524.390</b>	Motor hub CFA 90 Bore 70 mm		1	1	1	1	1	1	1
48 H-27	<b>1524.391</b>	Motor hub CFA 90 Bore 75mm		1	1	1	1	1	1	1
48 H-28	<b>1524.392</b>	Motor hub CFA 90 Bore 80 mm		1	1	1	1	1	1	1
48 H-29	<b>1524.393</b>	Motor hub CFA 90/140 Bore 85 mm		1	1	1	1	1	1	1
48 H-30	<b>1524.394</b>	Motor hub CFA 90/140 Bore 90 mm		1	1	1	1	1	1	1
48 H-31	<b>1524.395</b>	Motor hub CFA 90/140 Bore 95mm		1	1	1	1	1	1	1
48 H-32	<b>1524.396</b>	Motor hub CFA 90/140 Bore 100 mm		1	1	1	1	1	1	1
		<b>Compressor hub for coupling CFA 90</b>								
48 F-4	<b>1524.399</b>	Compressor hub for coupling CFA 90/140		1	1	1	1	1	1	1
48 J-1	<b>1526.137</b>	Locking assembly TLK 131 70x110		1	1	1	1	1	1	1

Pos. no	Part no.	Description	Kit Qty.	Compressor						
				SMC					TSMC	
				104	106	108	112	116	108	116
48 K-2	<b>2159.002</b>	Flywheel CFA 90/140 (only SMC 104 and T/SMC 108S)		1		1			1	
	<b>3188.723.</b>	<b>Spare part set CFA Size 90</b>		1	1	1	1	1	1	1
48 A-4	1524.401	Elastic element CFA 90	2							
48 L-2	1524.381	Radial bolt M20x70 mm with securing paste	6							
	1231.334	Copper grease	1							
48 G-5	<b>1524.404</b>	Intermediate part CFA 90 L = 128 mm		1	1	1	1	1	1	1
48 G-6	<b>1524.406</b>	Intermediate part CFA 90 L = 158 mm		1	1	1	1	1	1	1
48 G-7	<b>1524.407</b>	Intermediate part CFA 90 L = 173 mm		1	1	1	1	1	1	1
48 G-8	<b>1524.409</b>	Intermediate part CFA 90 L = 203 mm		1	1	1	1	1	1	1
48 M-2	<b>1524.383</b>	Pin bolt for CFA 90/140/200		6	6	6	6	6	6	6
		<b>Coupling CFA Size 140 (only SMC 108E, SMC 112 and T/SMC 116)</b>								
		<b>Motor hub for coupling CFA 140</b>								
48 H-29	<b>1524.393</b>	Motor hub CFA 90/140 Bore 85 mm				1	1	1		1
48 H-30	<b>1524.394</b>	Motor hub CFA 90/140 Bore 90 mm				1	1	1		1
48 H-31	<b>1524.395</b>	Motor hub CFA 90/140 Bore 95mm				1	1	1		1
48 H-32	<b>1524.396</b>	Motor hub CFA 90/140 Bore 100 mm				1	1	1		1
		<b>Compressor hub for coupling CFA 140</b>								
48 F-5	<b>1524.399</b>	Compressor hub for coupling CFA 90/140				1	1	1		1
48 J-1	<b>1526.137</b>	Locking assembly TLK 131 70x110				1	1	1		1
48 K-2	<b>2159.002</b>	Flywheel CFA 90/140 (only SMC 108E)				1				
	<b>3188.724.</b>	<b>Spare part set CFA Size 140</b>				1	1	1		1
48 A-5	1524.402	Elastic element CFA 140	2							
48 L-2	1524.381	Radial bolt M20x70 mm with securing paste	8							
	1231.334	Copper grease	1							
48 G-9	<b>1524.408</b>	Intermediate part CFA 140 L = 128 mm				1	1	1		1
48 G-10	<b>1524.410</b>	Intermediate part CFA 140 L = 173 mm				1	1	1		1
48 M-2	<b>1524.383</b>	Pin bolt for CFA 90/140/200				8	8	8		8
		<b>Coupling CFA Size 200 (only SMC 112E and SMC 116L/E)</b>								
		<b>Motor hub for coupling CFA 200</b>								
48 H-33	<b>1524.411</b>	Motor hub CFA 200 Bore 90 mm					1	1		
48 H-34	<b>1524.412</b>	Motor hub CFA 200 Bore 95mm					1	1		
48 H-35	<b>1524.378</b>	Motor hub CFA 200 Bore 100 mm					1	1		
		<b>Compressor hub for coupling CFA 200</b>								
48 F-6	<b>1524.377</b>	Compressor hub for coupling CFA 200					1	1		
48 J-1	<b>1526.137</b>	Locking assembly TLK 131 70x110					1	1		
	<b>3188.725.</b>	<b>Spare part set CFA Size 200</b>					1	1		
48 A-6	1524.380	Elastic element CFA 200	2							

Pos. no	Part no.	Description	Kit Qty.	Compressor							
				SMC			TSMC				
				104	106	108	112	116	108	116	
48 L-2	1524.381	Radial bolt M20x70 mm with securing paste	8								
	1231.334	Copper grease	1								
48 G-11	<b>1524.379</b>	Intermediate part CFA 200 L = 173 mm					1	1			
48 M-2	<b>1524.383</b>	Pin bolt for CFA 90/140/200					8	8			
		<b>Intermediate bearing</b>									
49-1	<b>3113.1003</b>	Intermediate bearing complete					1	1			1
49 A-1	3113.1002	Center bearing shell	2								
49 B-1	1413.389	Socket cap screw M12 x 45	4								
49 C-1	1437.081	Spring washer	4								
49 D-1	1446.022	Guide pin 5 x 26	4								
49 E-1	2133.025-H	Half section bearing metal - polymer	8								
49 F-1	<b>1424.199</b>	Hexagon head screw M10 x 65					2	2			2
49 G-1	<b>1437.033</b>	Spring washer					2	2			2
49 H-1	<b>2314.027</b>	Threaded plug 3/4" BSP					2	2			2
		<b>Capacity regulation</b>									
50 A-1	<b>3143.383</b>	Valve body with 1 solenoid valve		1							
50 A-2	<b>3143.384</b>	Valve body with 2 solenoid valves			1		2				
50 A-3	<b>3143.385</b>	Valve body with 3 solenoid valves				1		2	1	1	
50 A-4	<b>3143.386</b>	Valve body with 4 solenoid valves									1
50 B-1	<b>1372.537</b>	Coil 10 W 220/230V-50/60Hz		1	2	3	4	6	3	7	
50 B-2	<b>1372.538</b>	Coil 10 W 110V-50/60Hz		1	2	3	4	6	3	7	
50 B-3	<b>1372.539</b>	Coil 10 W 240V -50Hz		1	2	3	4	6	3	7	
50 C-1	<b>1372.424</b>	Service kit for one solenoid valve									
		<b>Crankcase heater 1 1/4 BSP kit</b>									
	<b>3184.375</b>	<b>Kit assembly crankcase heater 270W 115V</b>		1	1	1	2	2	1	2	
57 A-1	3181.034	Heater	1								
	1372.545	Plug	1								
57 B-1	1349.213	Sealing ring	1								
	<b>3184.376</b>	<b>Kit assembly crankcase heater 270W 230V</b>		1	1	1	2	2	1	2	
57 A-2	3181.035	Heater	1								
	1372.545	Plug	1								
57 B-1	1349.213	Sealing ring	1								
	<b>3184.377</b>	<b>Kit assembly crankcase heater 270W 250V</b>		1	1	1	2	2	1	2	
57 A-3	3181.036	Heater	1								
	1372.545	Plug	1								
57 B-1	1349.213	Sealing ring	1								
	<b>3188.141</b>	<b>Gasket kit heater, oil pressure valve etc.</b>		1	1	1	1	1	1	1	1
1 C-1	1331.543	O-ring 52.07 x 2.62	1								
22 B-1	2354.075	Gasket	1								
42 G-1	2356.123	Gasket	4								
45 K-1	2356.133	Gasket	1								

Pos. no	Part no.	Description	Kit Qty.	Compressor						
				SMC					TSMC	
				104	106	108	112	116	108	116
57 B-1	1349.213	Sealing ring	1							
		<b>Oil return kit</b>								
80 A-1	<b>1372.179</b>	Valve block EVRB		1	1	1				
80 B-1	<b>1371.037</b>	3.3 mm orifice for mounting in valve block		1	1	1				
80 C-1	<b>1375.094</b>	TLT valve		1	1	1				
80 J-1	<b>1372.537</b>	Coil 10 W 220/230V-50/60Hz		1	1	1				
80 J-2	<b>1372.538</b>	Coil 10 W 110V-50/60Hz		1	1	1				
80 J-3	<b>1372.539</b>	Coil 10 W 240V -50Hz		1	1	1				
80 J-4	<b>1372.541</b>	Coil 10 W 24V -50Hz		1	1	1				
		<b>Oil return kit</b>								
80 E-/ 80 G	<b>1372.089</b>	Strainer kit EVRB block NO/NC		1	1	1				
80 P-H- K-M-L	<b>1372.086</b>	Service kit EVRB block NC		1	1	1				
80 G-K- M-LQ	<b>1372.091</b>	Seal kit EVRB block NC		1	1	1				
80 L-Q-I	<b>1371.037</b>	Orifice kit 3.3 mm EVRB/NC		1	1	1				
80 X	<b>1377.475</b>	Membrane kit		1	1	1				
		<b>Oil Separators</b>								
		<b>Oil Separator OHUR 3206</b>								
85 A-1	<b>1517.177</b>	Coaleser Element		1	1	1	1	1	1	1
85 B-1	<b>1331.604</b>	O-ring 329.57 x 5.33		1	1	1	1	1	1	1
85 C-1	<b>1331.636</b>	O-ring 219.3 x 5.7		1	1	1	1	1	1	1
85 D-1	<b>2356.133</b>	Alu-ring 27/21 x 1.5		3	3	3	3	3	3	3
85 E-1	<b>2356.141</b>	Alu-ring 36/28 x 1.5		1	1	1	1	1	1	1
		<b>Oil Separator OHUR 4012</b>								
86 A-1	<b>1517.178</b>	Coaleser Element		1	1	1	1	1	1	1
86 B-1	<b>1331.723</b>	O-ring 405.26 x 5.33		1	1	1	1	1	1	1
86 C-1	<b>1331.722</b>	O-ring 266.00 x 5.33		1	1	1	1	1	1	1
85 D-1	<b>2356.133</b>	Alu-ring 27/21 x 1.5		3	3	3	3	3	3	3
85 E-1	<b>2356.141</b>	Alu-ring 36/28 x 1.5		1	1	1	1	1	1	1
		<b>Intermediate pressure connections TSMC 108</b>								
90 A-1	<b>3114.095</b>	Mixing chamber with flange TSMC 108							1	
90 B-1	<b>3115.102</b>	Counter flange for mixing chamber TSMC 108							1	
90 C-1	<b>3422.100</b>	Intermediate ring 107/88							1	
90 F-1	<b>1424.222</b>	Hexagon head screw M12 x 65							4	
90 G-1	<b>1424.246</b>	Hexagon head screw M14 x 65							4	
90 H-1	<b>1437.026</b>	Spring washer dia.13.2/21.2 x 2.5							4	
90 J-1	<b>1437.030</b>	Spring washer dia.14							4	
90 K-1	<b>1432.036</b>	Nut M14							4	

Pos. no	Part no.	Description	Kit Qty.	Compressor						
				SMC					TSMC	
				104	106	108	112	116	108	116
		<b>Intermediate pressure connections TSMC 116</b>								
90 A-1	<b>3114.111</b>	Inlet pipe w.mixing chamber and Stop valve SVA-S 100 TSMC 116								1
90 C-1	<b>3422.111</b>	Intermediate ring 148/116								1
90 D-1	<b>1331.579</b>	O-ring 113.89 x 3.53								1
90 E-1	<b>1331.581</b>	O-ring 120.24 x 3.53								1
90 F-1	<b>1424.108</b>	Hexagon head screw M16 x 75								4
90 H-1,	<b>1437.027</b>	Spring washer dia.27.4/16.2 x 3.5								4
	<b>3188.023</b>	<b>Gasket kit intermediate connection TSMC108</b>							1	
90 D-1	1331.697	O-ring 82.14 x 3.53	1							
90 E-1	1331.574	O-ring 98.02 x 3.53	1							
90 L-1	1331.573	O-ring 91.67 x 3.53	1							
90 N-1	2356.123	Gasket 18/10 x 1.5	1							
90 M-1	1331.573	O-ring 91.67 x 3.53	1							
	<b>3188.024</b>	<b>Gasket kit intermediate connection TSMC116</b>								1
90 D-1	1331.579	O-ring 113.89 x 3.53	1							
90 E-1	1331.581	O-ring 120.24 x 3.53	1							
90 H-1	1331.583	O-ring 132.94 x 3.53	1							
90 K-1	2356.123	Gasket 18/10 x 1.5	1							

Pos. no	Part no.	Description	Kit Qty.	Compressor						
				SMC					TSMC	
				104	106	108	112	116	108	116
		<b>Oil cooling</b>								
		<b>Oil cooler HFC</b>								
92-1	<b>4242.038</b>	Oil cooler OOKH HFC		1	1	1				
		<b>Oil cooler R717</b>								
92-2	<b>4242.029</b>	Oil cooler OOSI R717		1	1	1				
		<b>Oil cooling kit</b>								
	<b>3184.378</b>	<b>Kit assembly oil cooling</b>		1	1	1				
92 A-1	3182.025	Adaptor for oil cooler	1							
92 C-1	1413.345	Cylinder screw M6 x 40	4							
92 F-1	2311.007	Threaded nipple	1							
92 H-1	1343.025	Plug with rim 1/4in RG	1							
92 L-1	1343.026	Plug with rim 3/8in RG	1							
	<b>3188.140</b>	<b>Gasket kit oil cooling</b>		1	1	1				
92 B-1	1331.131	O-ring 25.07 x 2.62	1							
92 D-1	2356.130	Gasket dia. 25/17 x 1.5	1							
92 E-1	2356.139	Gasket dia. 32/27 x 1.5	1							
92 G-1	2356.133	Gasket dia. 27/21 x 1.5	1							
92 J-1	2356.125	Gasket dia. 20/13 x 1.5	1							
92 K-1	1331.549	O-ring 21.82 x 3.53	1							
92	<b>1371.301</b>	Expansion valve TX 2		1	1	1	1	1	1	1
92	<b>1371.339</b>	Nozzle no.01 for T2/TE2 valve		1	1	1	1	1	1	1
92	<b>1371.026</b>	Expansion valve TN 2		1	1	1	1	1	1	1
92	<b>1371.340</b>	Nozzle no.02 for T2/TE2 valve		1	1	1	1	1	1	1
92	<b>1371.027</b>	Expansion valve TS 2		1	1	1	1	1	1	1
92	<b>1371.340</b>	Nozzle no.02 for T2/TE2 valve		1	1	1	1	1	1	1
92	<b>1371.085</b>	Expansion valve TU-A		1	1	1	1	1	1	1
92	<b>1371.366</b>	Nozzle no.04 for TUA valve		1	1	1	1	1	1	1
92	<b>1371.027</b>	Expansion valve TS 2		1	1	1	1	1	1	1
92	<b>1371.366</b>	Nozzle no.04 for TUA valve		1	1	1	1	1	1	1
92	<b>1371.230</b>	Expansion valve TEA20-2 w. nozzle		1	1	1	1	1	1	1
		<b>Thermo pump</b>								
98 A-1	<b>3113.145</b>	Side cover for thermo pump		1	1	1	2	2	1	1
98 B-1	<b>1553.215</b>	Control box for thermo pump		1	1	1	2	2	1	1
98 D-1	<b>1372.179</b>	Valve block EVRB		1	1	1	2	2	1	1
98	<b>1371.037</b>	3.3 mm orifice for mounting in valve block								
98 C-1	<b>3185.038</b>	Level feeler - complete for SMC		2	2	2	4	4	2	2
98 G-1	<b>1372.422</b>	Solenoid valve 2.2 EVRA 1.5		1	1	1	2	2	1	1
98 H-1	<b>1372.423</b>	Solenoid valve 2.2 EVRA 3.5		1	1	1	2	2	1	1
98 J-1	<b>1372.537</b>	Coil 10 W 220/230V-50/60Hz		1	1	1	1	1	1	1
98 J-2	<b>1372.538</b>	Coil 10 W 110V-50/60Hz		1	1	1	1	1	1	1
98 J-3	<b>1372.539</b>	Coil 10 W 240V -50Hz		1	1	1	1	1	1	1
98 K-1	<b>1364.008</b>	Check valve		2	2	2	4	4	2	2
98 M-1	<b>2314.103</b>	VA-joint		3	4	5	7	9	1	3
98 Q-1	<b>3113.143</b>	Cooling cover		1	1	1	2	2	1	1
98 R-1	<b>2353.189</b>	Gasket for top- and side cover		2	2	2	4	4	2	2
98 S-1	<b>1424.081</b>	Hexagon head screw M14 x 80		13	16	16	32	32	16	16

Pos. no	Part no.	Description	Kit Qty.	Compressor						
				SMC					TSMC	
				104	106	108	112	116	108	116
98 T-1	<b>4242.029</b>	Oil cooler type OOSI for R717		1	1	1	1	1	0	1
98 U-1	<b>1372.422</b>	Solenoid valve 2.2 EVRA 1.5		1	1	1	0	0	0	1
98 V-1	<b>1372.422</b>	Solenoid valve 2.2 EVRA 1.5		1	1	1	2	2	1	1
98 X-1	<b>1373.324</b>	PT 100 sensor		1	1	1	1	1	1	1
98	<b>1372.545</b>	Plug		1	1	1	1	1	1	1
98	<b>1554.159</b>	Gasket for plug		1	1	1	1	1	1	1
98 Y-1	<b>1361.117</b>	Needle valve		1	1	1				
98 Z-1	<b>1364.022</b>	Non return valve		1	1	1	2	2	1	1
		<b>Pulley</b>								
999	<b>1526.073</b>	Cone Clamping unit		1	1	1	1	1	1	1
999	<b>2152.151</b>	Pulley DP 400, 4 Grooves, SPB		1	1	1	1	1	1	1
999	<b>2152.152</b>	Pulley DP 400, 6 Grooves, SPB		1	1	1	1	1	1	1
999	<b>2152.153</b>	Pulley DP 400, 8 Grooves, SPB		1	1	1	1	1	1	1
		<b>Unisab</b>								
	<b>3184.007</b>	<b>Support for SMC 104/106/108 Unisab III</b>		1	1	1			1	
99	1424.176	Hexagon head M8 x 20	4							
99 C-1	1424.190	Hexagon head M10 x 20	2							
99 F-1	1436.035	Washer 21/10.5 x 2.0	2							
99 A-1	2215.121	Console Unisab III	1							
	2215.127	Intermediate plate SMC	1							
	<b>3184.006</b>	<b>Support for SMC 112-116 Unisab III</b>					1	1		1
99	1424.176	Hexagon head M8 x 20	4							
99 C-1	1424.190	Hexagon head M10 x 20	2							
99 F-1	1436.035	Washer 21/10.5 x 2.0	2							
99 A-1	2215.121	Console Unisab III	1							
	2215.127	Intermediate plate SMC	1							
	2215.139	Elevation platform SMC Unisab III	1							
		<b>Pressure transmitters Unisab III</b>								
PPT1	<b>1373.268</b>	Pressure transmitter AKS 3000 -1/9 BAR		1	1	1	1	1	1	1
PPT2/3	<b>1373.269</b>	Pressure transmitter AKS 3050 -1/25 BAR		2	2	2	2	2	3	3
PPT 1/2/3/4	<b>1349.137</b>	Male stud coupling		3	3	3	3	3	4	4
PPT3	<b>1349.233</b>	V-threaded connection		1	1	1	1	1	1	1
		<b>Temperature sensors</b>								
PTT 5/7/8	<b>1373.319</b>	Temperature sensor PT100, 80mm w.cooling neck		2	2	2	2	2	3	3
PTT6	<b>1373.329</b>	Temperature sensor PT100, 80mm w/o cooling neck		1	1	1	1	1	1	1
PTT 5/6/7	<b>1349.077</b>	Reducer		3	3	3	3	3	4	4
PTT 5/6/7	<b>2356.125</b>	Gasket		3	3	3	3	3	4	4



Pipe works		Unloading			Thermo pump	
		Standard	Extended and total	VSD	Fixed speed	VSD
SMC/HPC 104	No motor tunnel	3143.393	3143.367	3143.553	3143.601	3143.588
	With motor tunnel	3143.472	3143.517	3143.554		
SMC/HPC 106	No motor tunnel	3143.394	3143.522	3143.548	3143.602	3143.589
	With motor tunnel	3143.492	3143.521	3143.549		
SMC/HPC 108	No motor tunnel	3143.576	3143.577	3143.529	3143.590	3143.590
	With motor tunnel	3143.578	3143.579	3143.536		
TSMC 108	No motor tunnel	3143.394	NA	3143.605	3143.603	3143.603
	With motor tunnel	3143.594	NA	3143.596		
SMC 112	No motor tunnel	3143.580	3143.581	3143.540	3143.591	3143.591
	With motor tunnel	3143.582	3143.583	3143.547		
SMC 116	No motor tunnel	3143.584	3143.585	3143.555	3143.592	3143.592
	With motor tunnel	3143.586	3143.587	3143.556		
TSMC 116	No motor tunnel	3143.397	NA	3143.606	3143.604	3143.604
	With motor tunnel	3143.598	NA	3143.600		

### 1.1.4 Tools for compressor

The SMC Mk 4 and HPC Mk 4 compressor tool set comprises the tool set for Mk 3 and a supplementary set for Mk 4.

The tool set for Mk 3

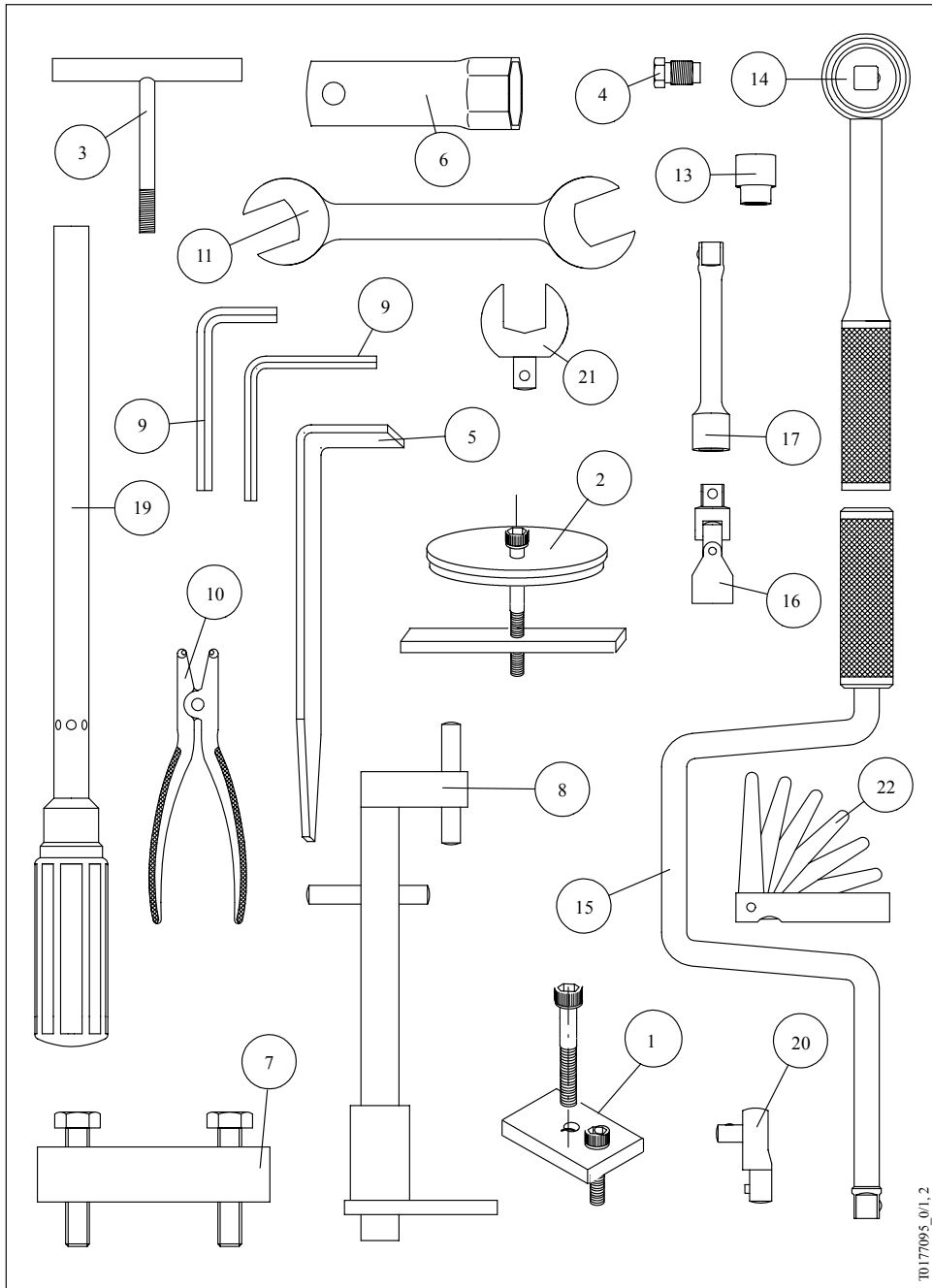


Fig. 1

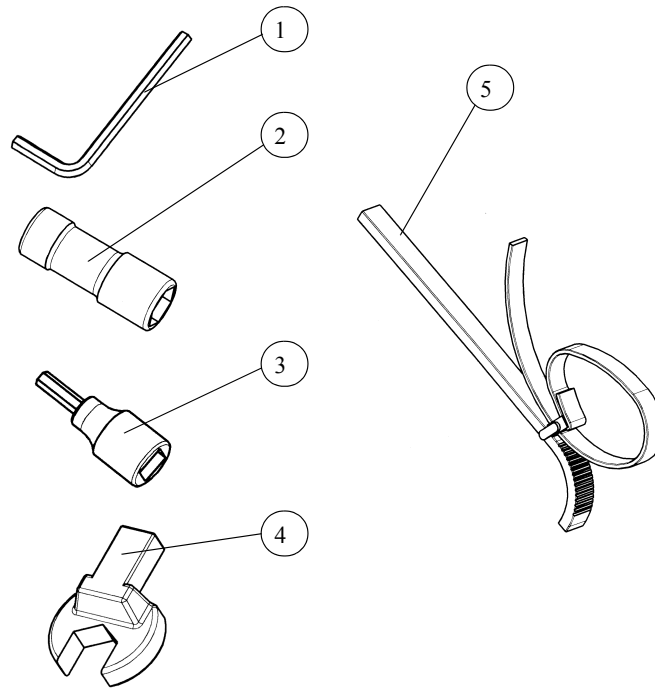
**SMC 104-116 Mk3 & TSMC 108-116 Mk3 - Types S-L-E  
HPC 104-106-108 Mk4**

Line no. A600 = Normal set, tools set no. 3183-109  
 Line no. A601 = Extended set, tools set no. 3183-110  
 Line no. A602A = Tools for coupling (SMC 104-108), tools set no. 3183-118  
 Line no. A602B = Tools for coupling (SMC 112-116), tools set no. 3183-119  
 Line no. A603 = Tools for alignment of coupling

Pos. no.	Designation	Dimension	Part no.	Line no.				
				A600	A601	A602		A603
						A	B	
1-1	Clamp with screw, compr. type S and L		3183-144	4	4			
1-2	Clamp with screw, compr. type E		3183-145		4	4		
2	Tools for shaft seal		3183-139	1	1			
3	Tommy screw for cylinder liner		3183-041	2	2			
4	Theaded plug for unloading cylinder	3/8" BSP	2314-017	2	2			
5	Supporting plate for pistons		3183-115	8	8			
6	Spanner for heating cartridge	NV 55	3183-060	1	1			
7	Trigger for coupling or belt pulley		3183-059	1	1			
8-1	Adjusting jig for coupling		3183-105					1
8-2	Adjusting jig for CFA coupling		3183-162					
9-1	Wrench for cylinder screw	NV 4			1			
9-2	Wrench for cylinder screw	NV 5			1			
9-3	Wrench for cylinder screw	NV 8			1			
9-4	Wrench for cylinder screw	NV 10			1			
9-5	Special wrench for shaft seal	NV 4	1612-392	1	1			
10-1	Retaining-ring plier	J 21/G			1			
10-2	Retaining-ring plier	A 11/G			1			
11-1	Open end and ring spanner	NV 10			1			
11-2	Open end and ring spanner	NV 17			1			
11-3	Open end and ring spanner	NV 19			1			
11-4	Open end and ring spanner	NV 22			1			
11-5	Open end and ring spanner	NV 24			1			
11-6	Open end and ring spanner	NV 27			1			
13-1	Socket wrench	NV 10			1			
13-2	Socket wrench	NV 13			1			
13-3	Socket wrench	NV 17			1			
13-4	Socket wrench	NV 19			1			
13-5	Socket wrench	NV 22			1			
13-6	Socket wrench	NV 24			1	1	1	
13-7	Socket wrench	NV 27			1			
13-8	Socket wrench	NV 30			1			
13-9	Socket wrench	NV 32			1			
13-10	Socket wrench	NV 9/16"			1			
13-11	Socket wrench	NV 3/4"			1		1	
13-12	Socket wrench	NV 11/16"			1	1		
14	Ratchet handle				1			
15	Speed handle				1			
16	Universal joint for socket wrench				1			
17-1	Extension rod for socket wrench				1			
17-2	Extension rod for socket wrench				1			
19-1	Torque wrench 15-90 Nm				1			

Pos. no.	Designation	Dimension	Part no.	Line no.				
				A600	A601	A602		A603
						A	B	
19-2	Torque wrench 40-200 Nm				1	1	1	
20	Coupler for torque wrench 1/2				2	1	1	
21-1	Open spanner for torque wrench	NV 11/16"			1	1		
21-2	Open spanner for torque wrench	NV 3/4"			1		1	
22	Feeler gauge							1

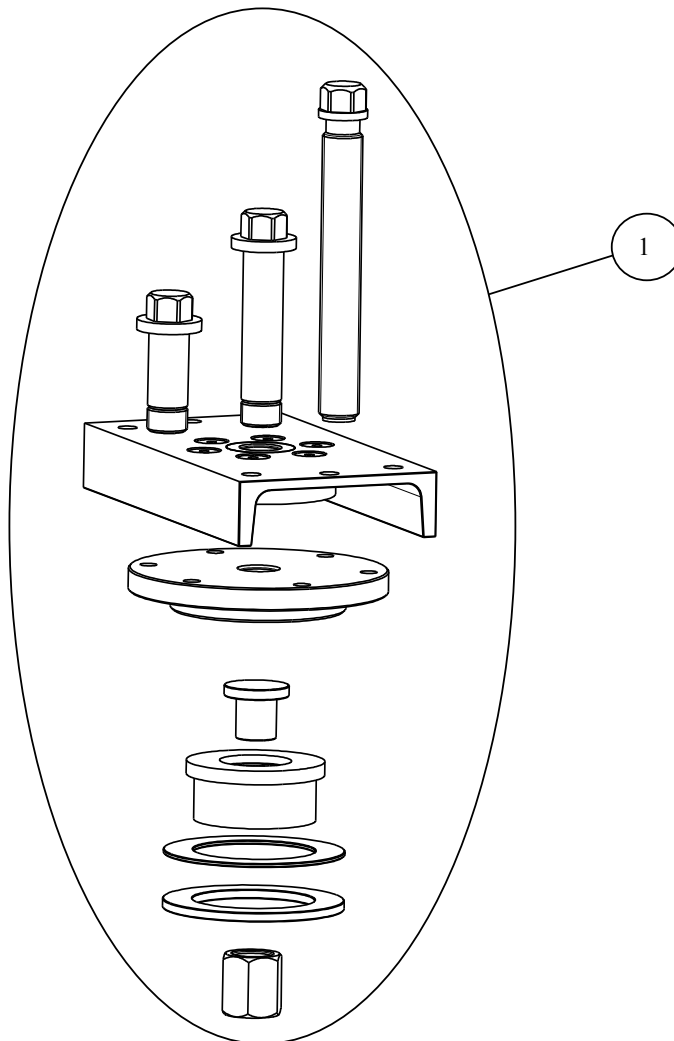
### 1.1.5 Supplementary tool set for SMC 100 Mk4 and HPC Mk4



Line no. A605 = Supplementary tool set for Mk4 no. 3183.148

Pos. No.	Designation	Dimension	Part No.	Line No.		
				A605		
1	Allen key for needle valves in pump housing	1/4"	1612.417	1		
2	Box spanner insert for water-cooled covers	22 mm 1/2" square	1612.323	1		
3	Bit adapter for Mk4 coupling	6 mm Allen key 1/2" square	1612.342	1		
4	Open end spanner for torque wrench (temporarily for Mk4 coupling)	NV 13	1612.262	1		
5	Oil filter wrench for Spin-on oil filter	dia.100	1612.166	1		

### 1.1.6 Tool set for change of main bearings



Pos. no.	Designation	Part no.	Line no.
			A606
1	Tool set for change of SMC/HPC main bearings	3183.176	1

## 2. Drawings

### 2.1.1 SMC 104-106-108

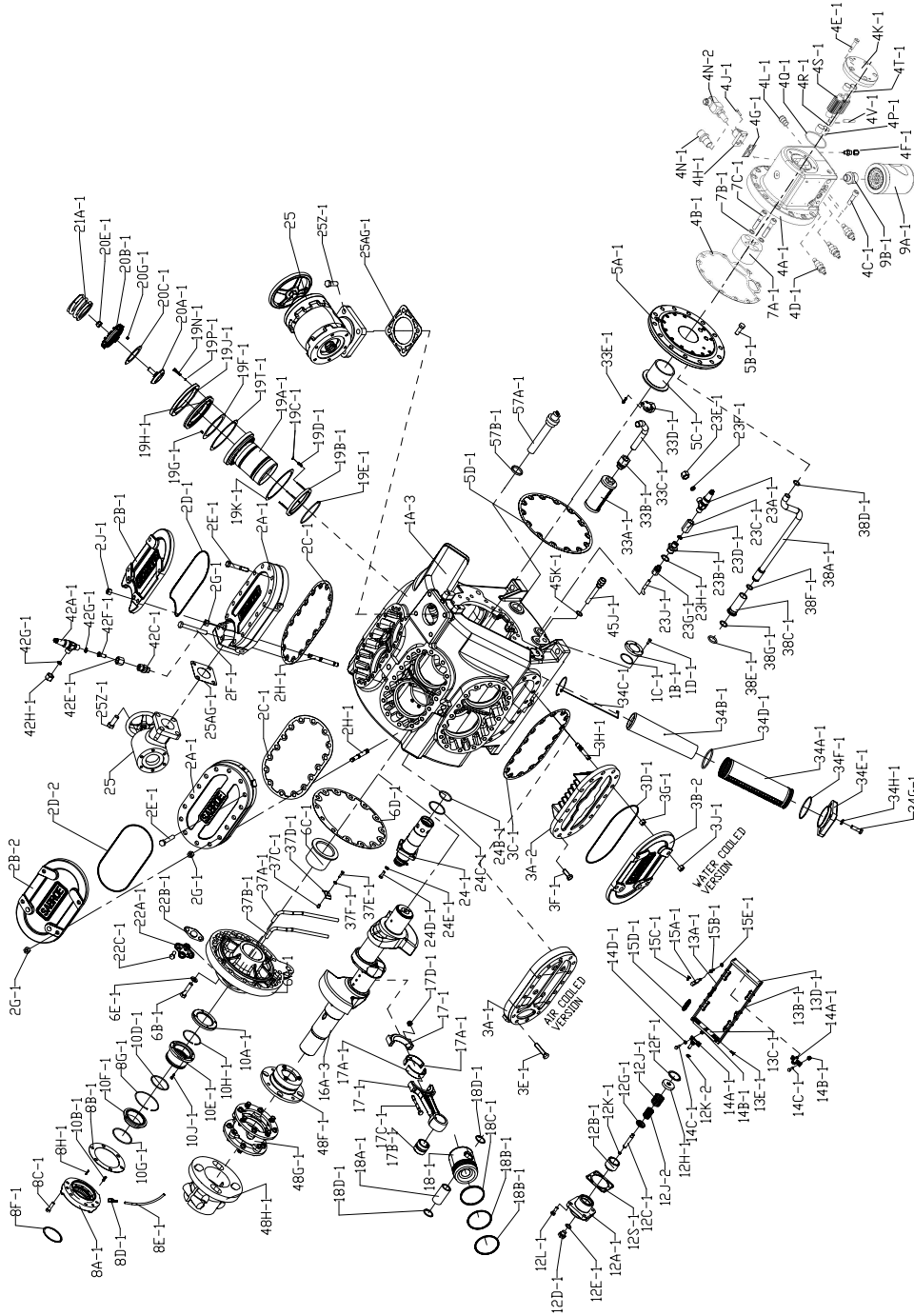


Fig. 2: SMC 104-106-108

### 2.1.2 TSMC 108

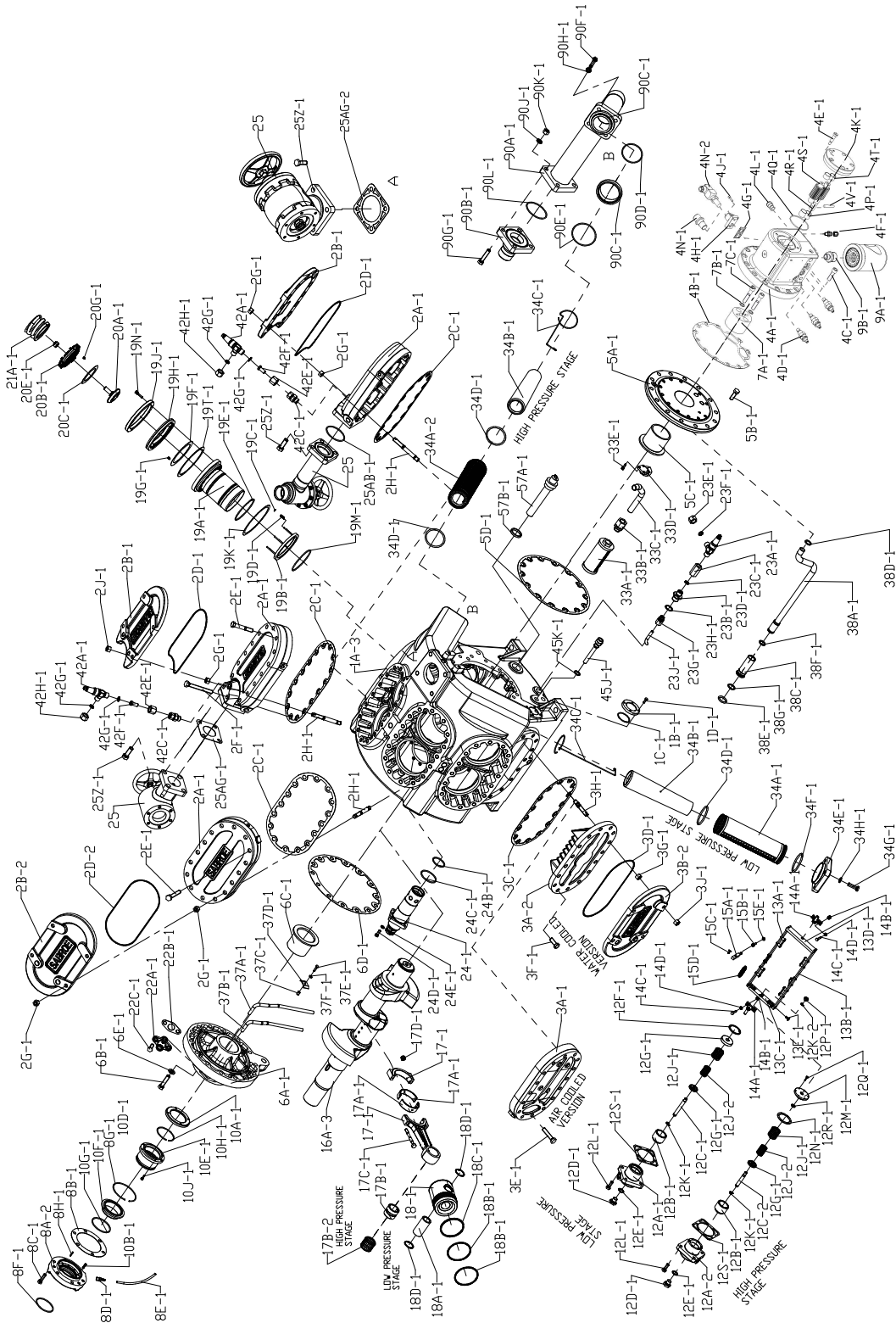


Fig. 3: TSMC 108



### 2.1.3 SMC 112-116

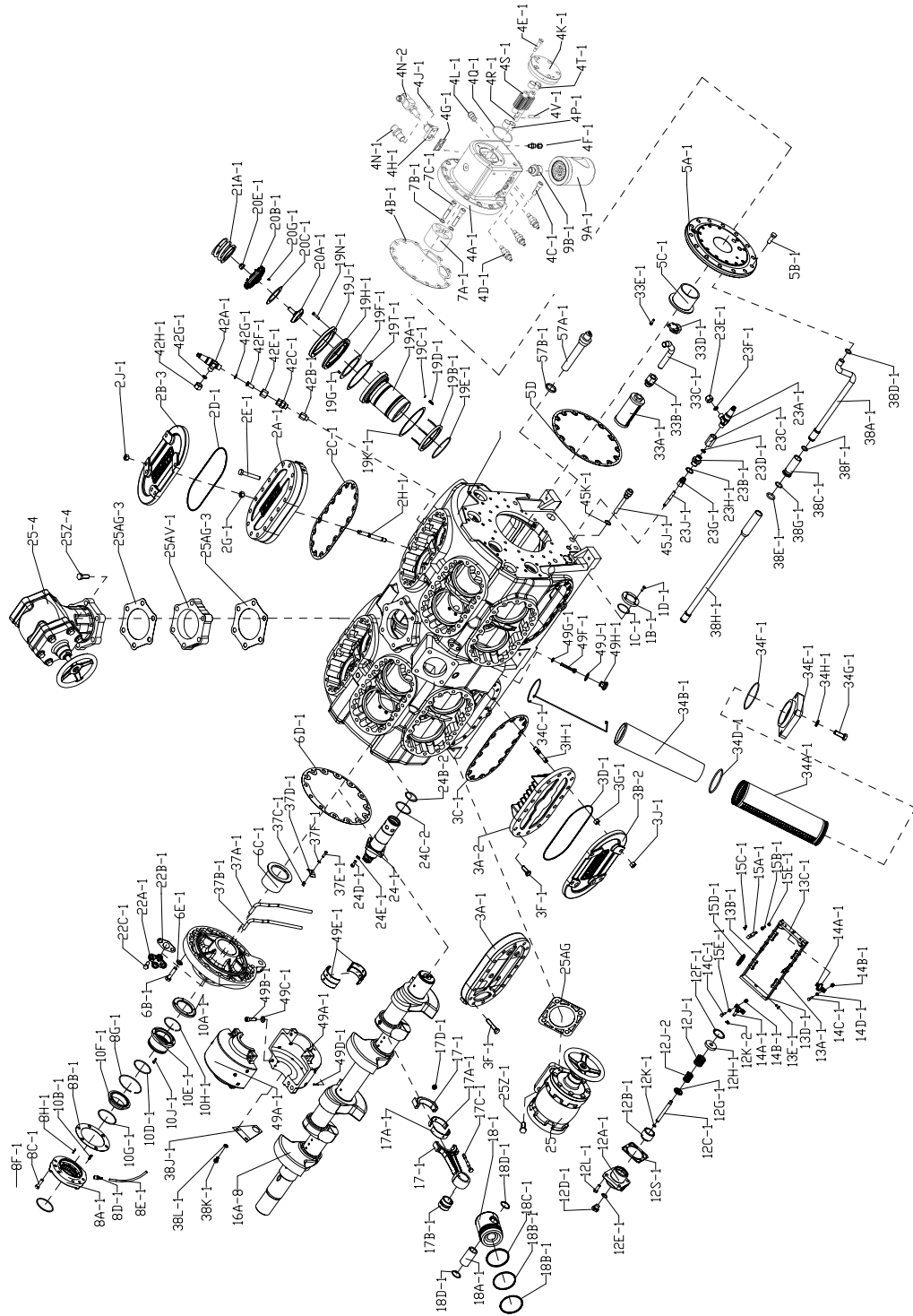


Fig. 4: SMC 112-116

### 2.1.4 TSMC 116

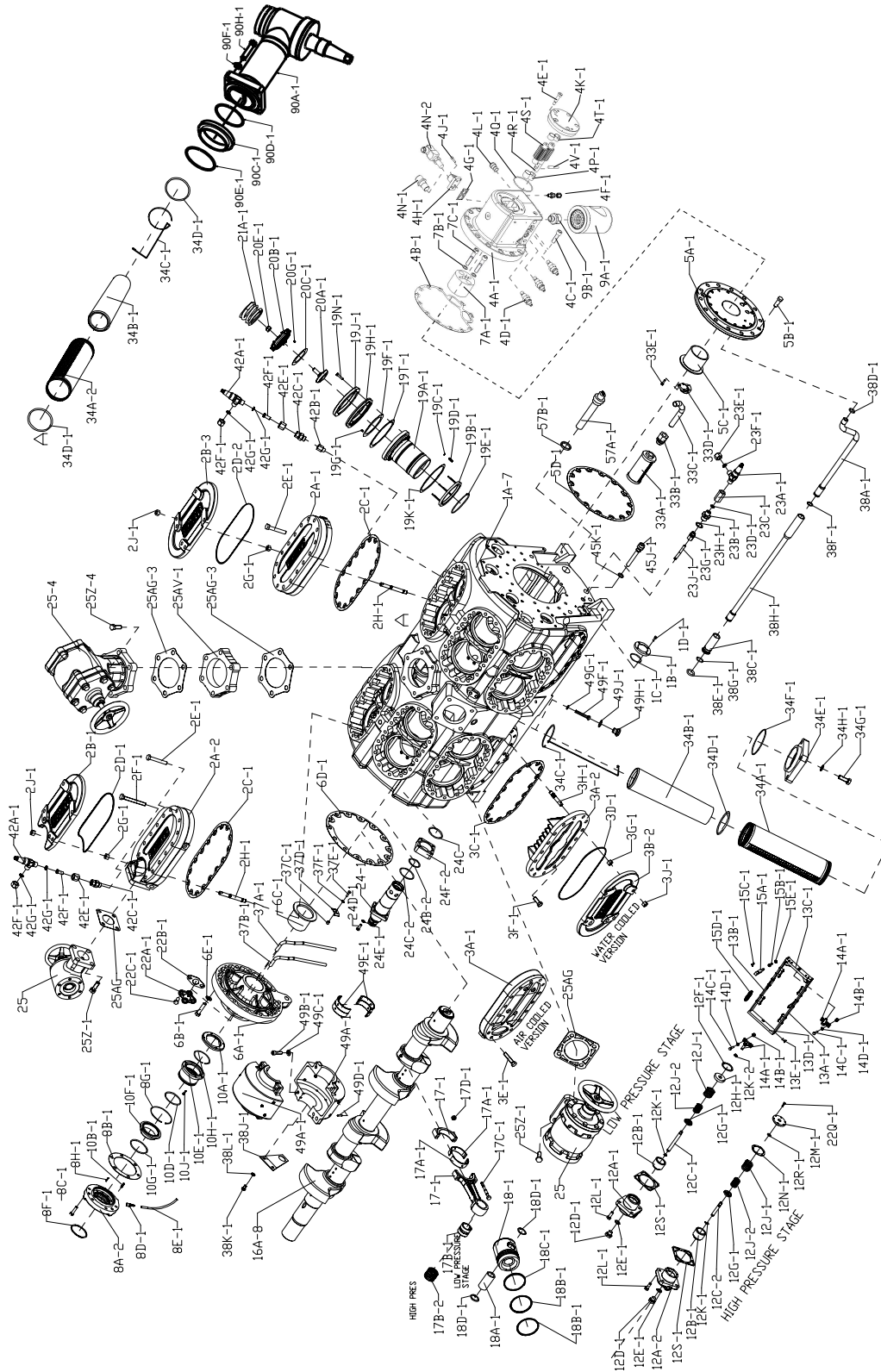


Fig. 5: TSMC 116

### 2.1.5 Piston, cylinder liner and connecting rod

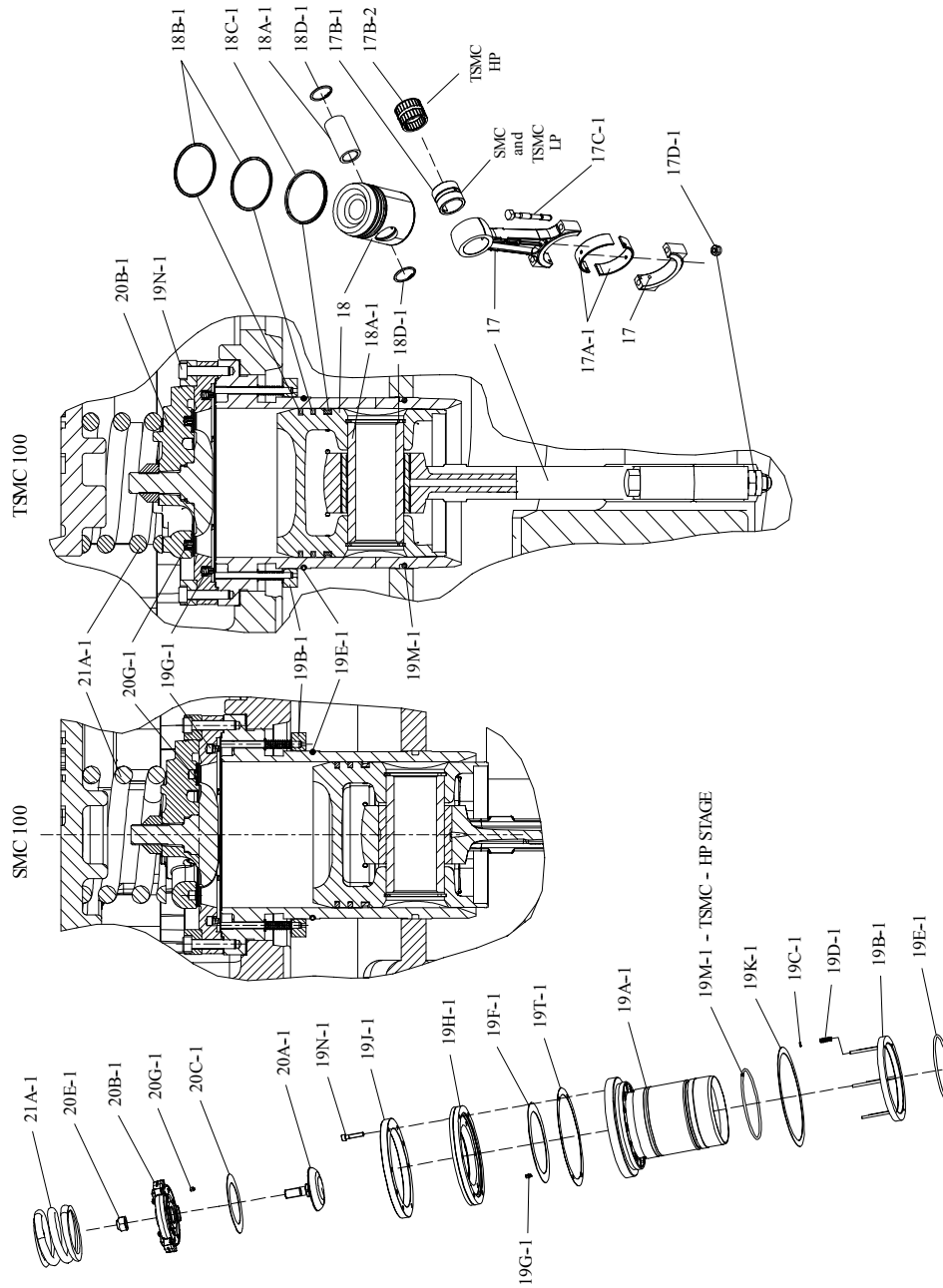
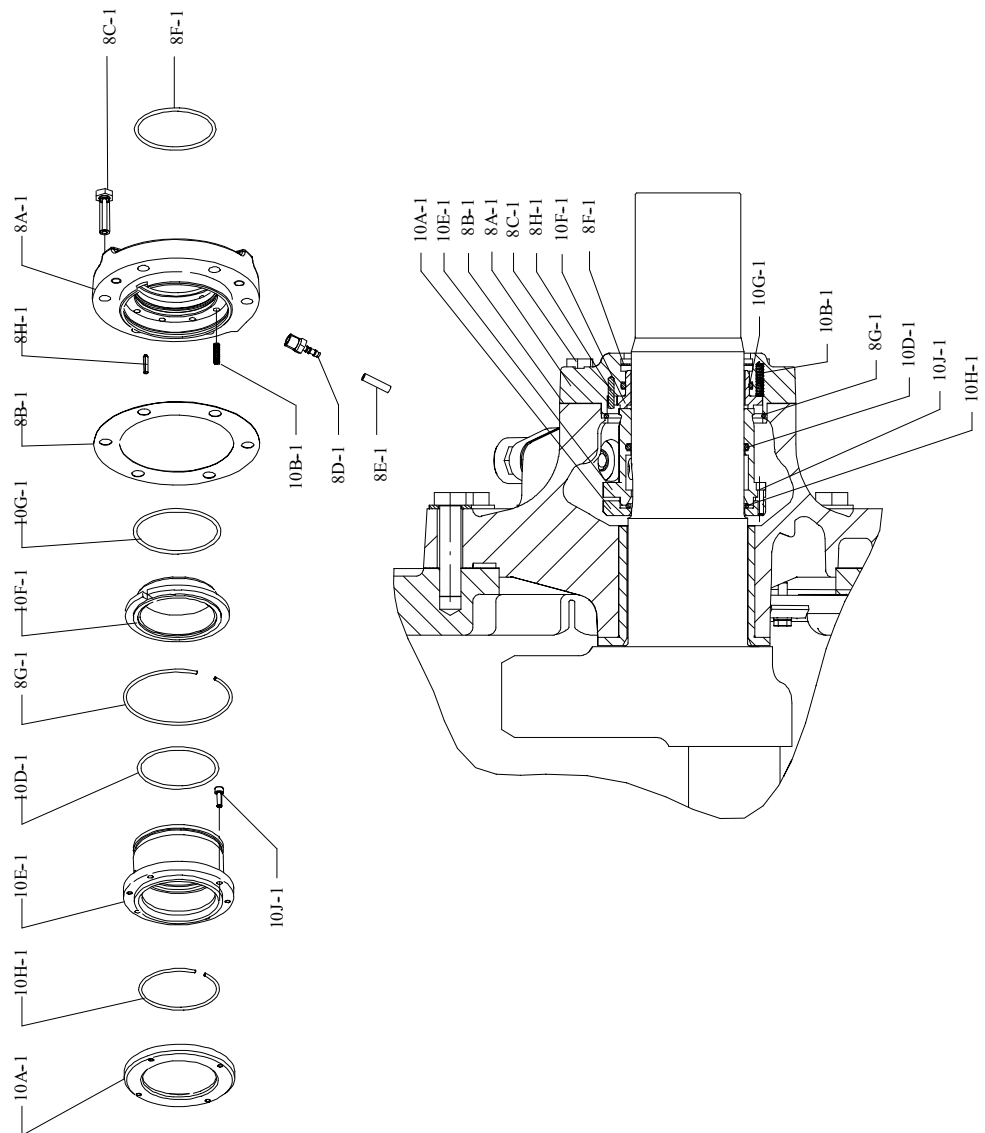


Fig. 6

### 2.1.6 Shaft seal



### 2.1.7 Covers

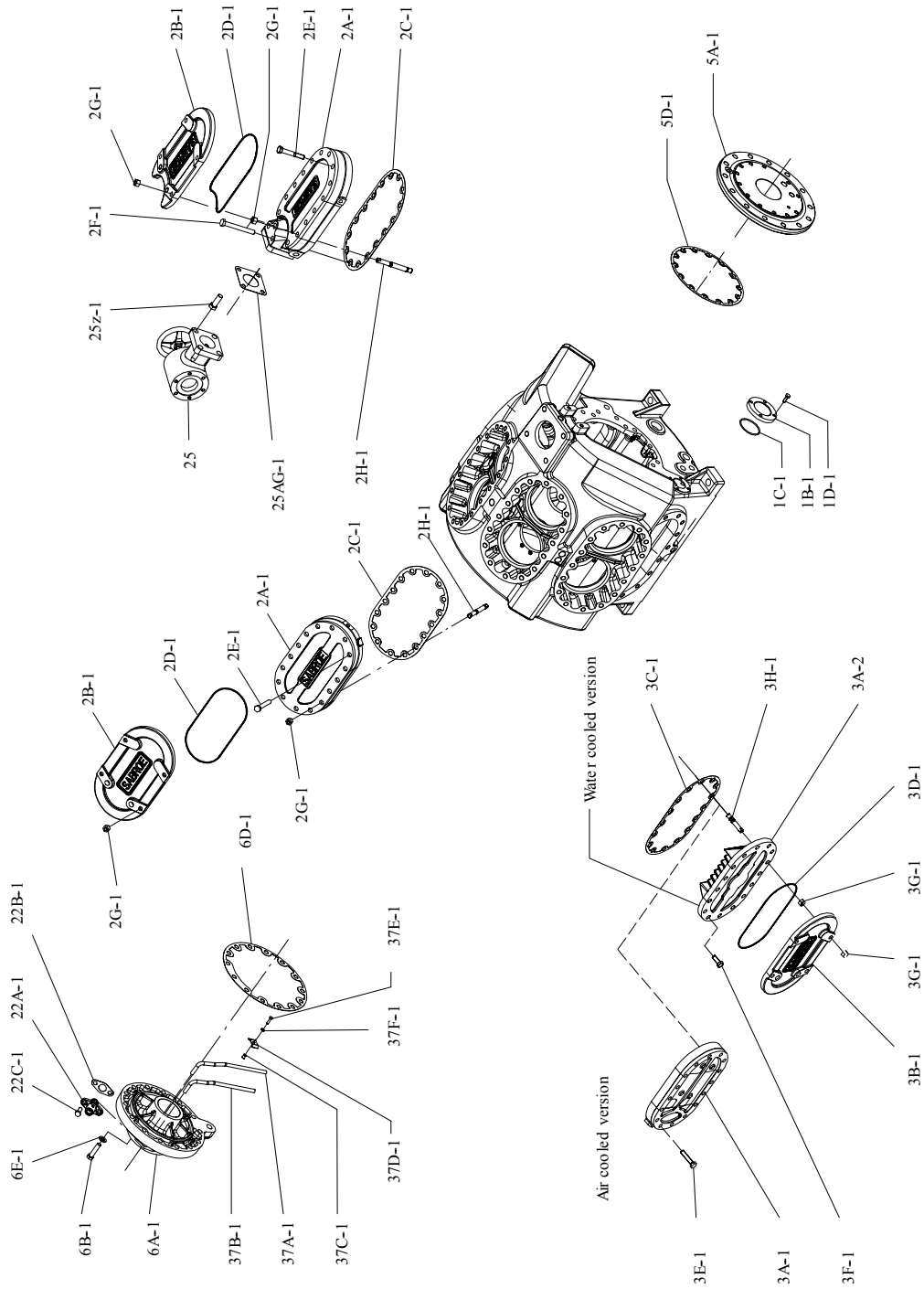


Fig. 7

### 2.1.8 Crankshaft, bearings and coupling

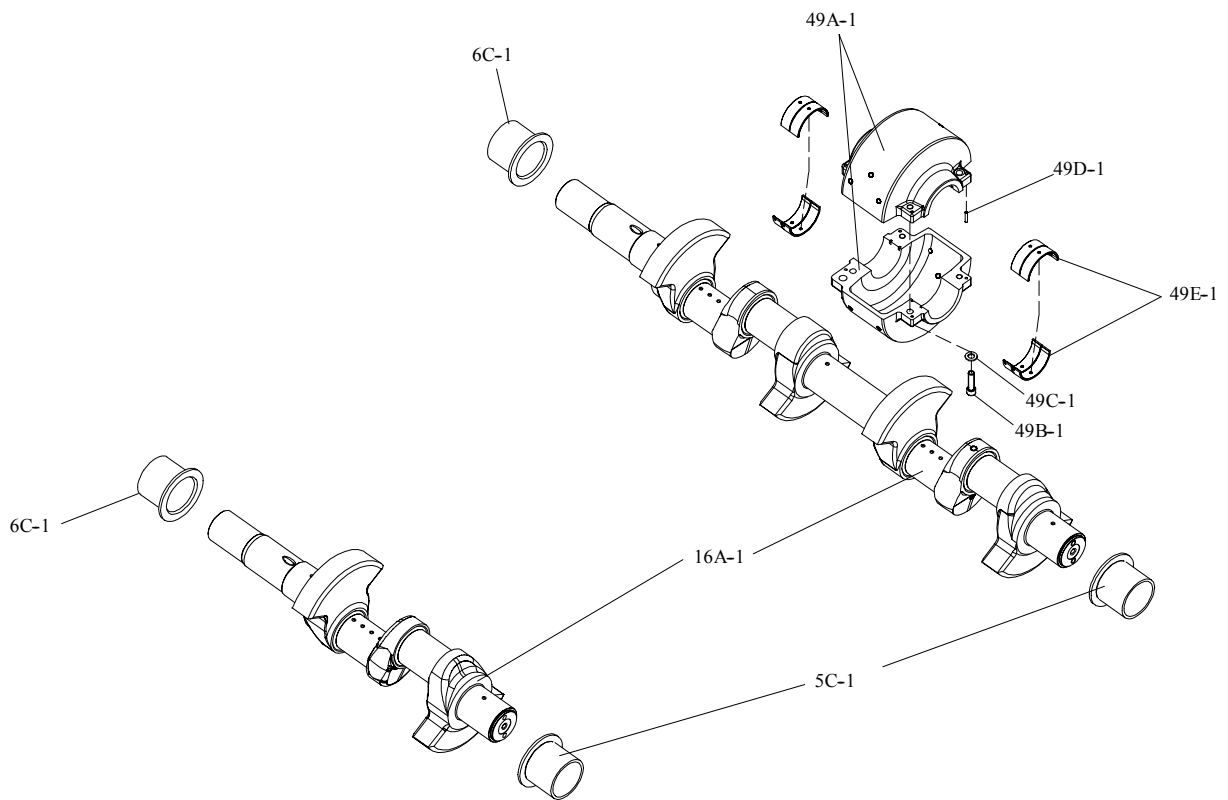


Fig. 8

### 2.1.9 Oil system

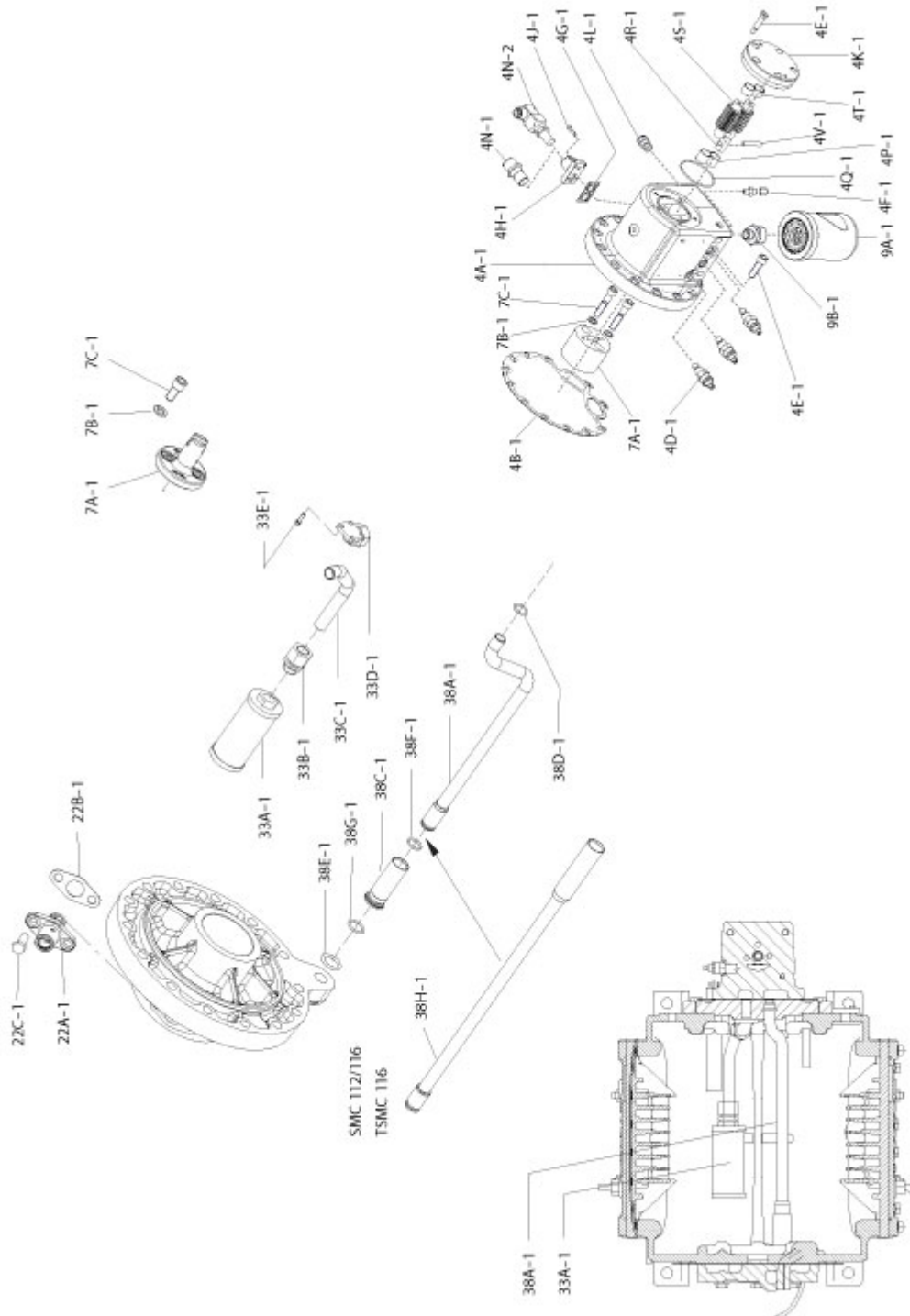


Fig. 9

### 2.1.10 Unloading frame/cylinder

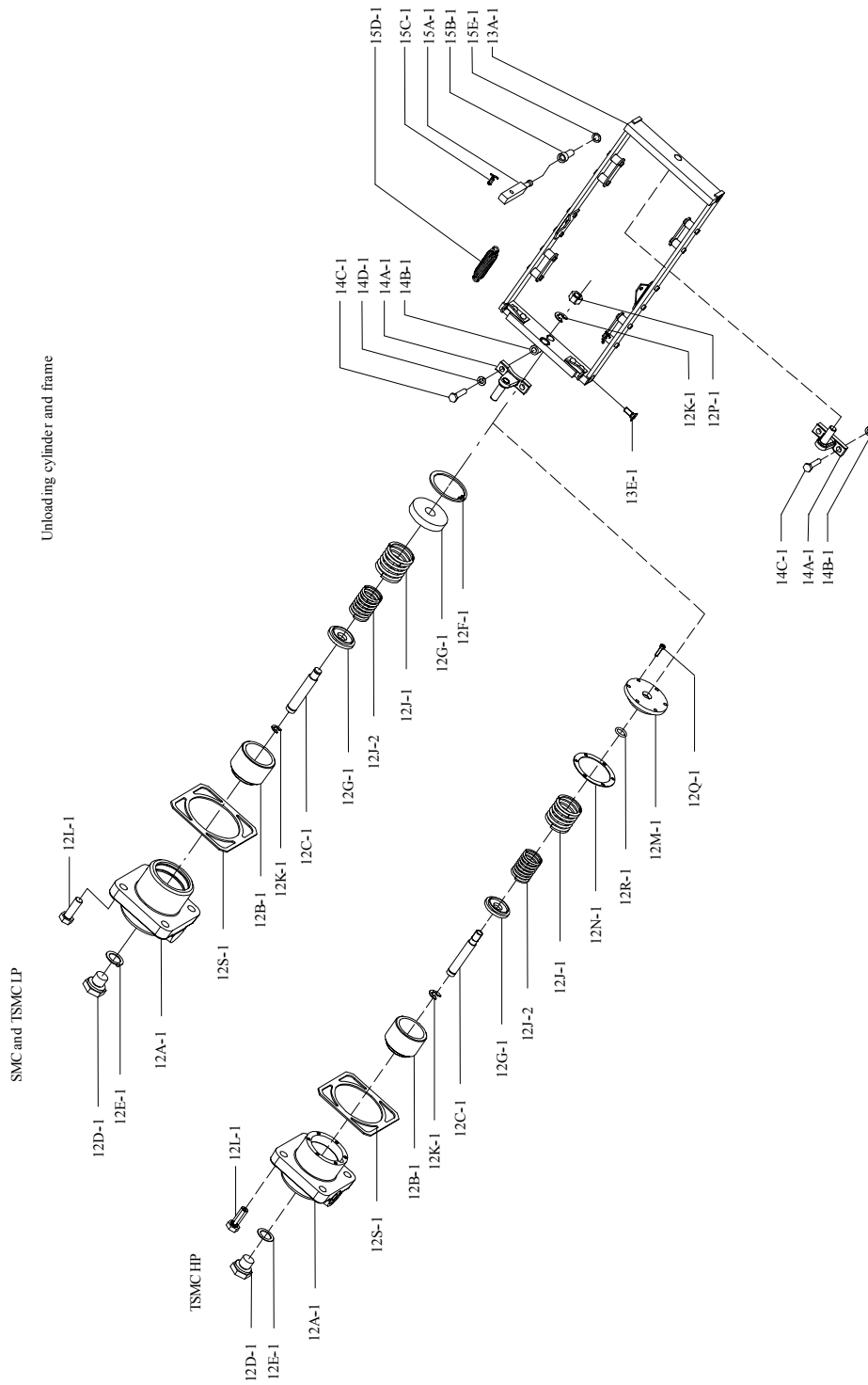


Fig. 10



### 2.1.11 By-pass and service valves

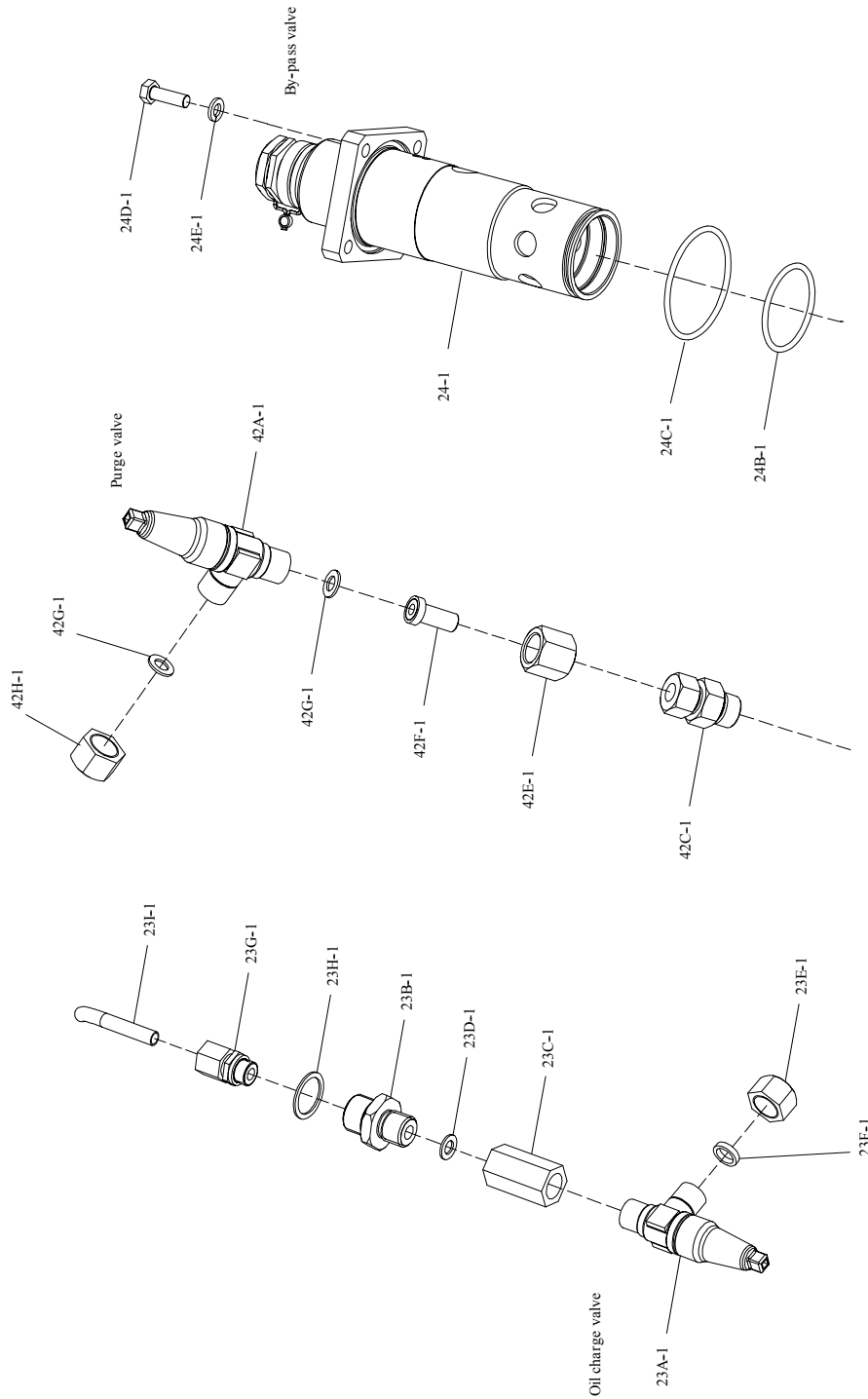
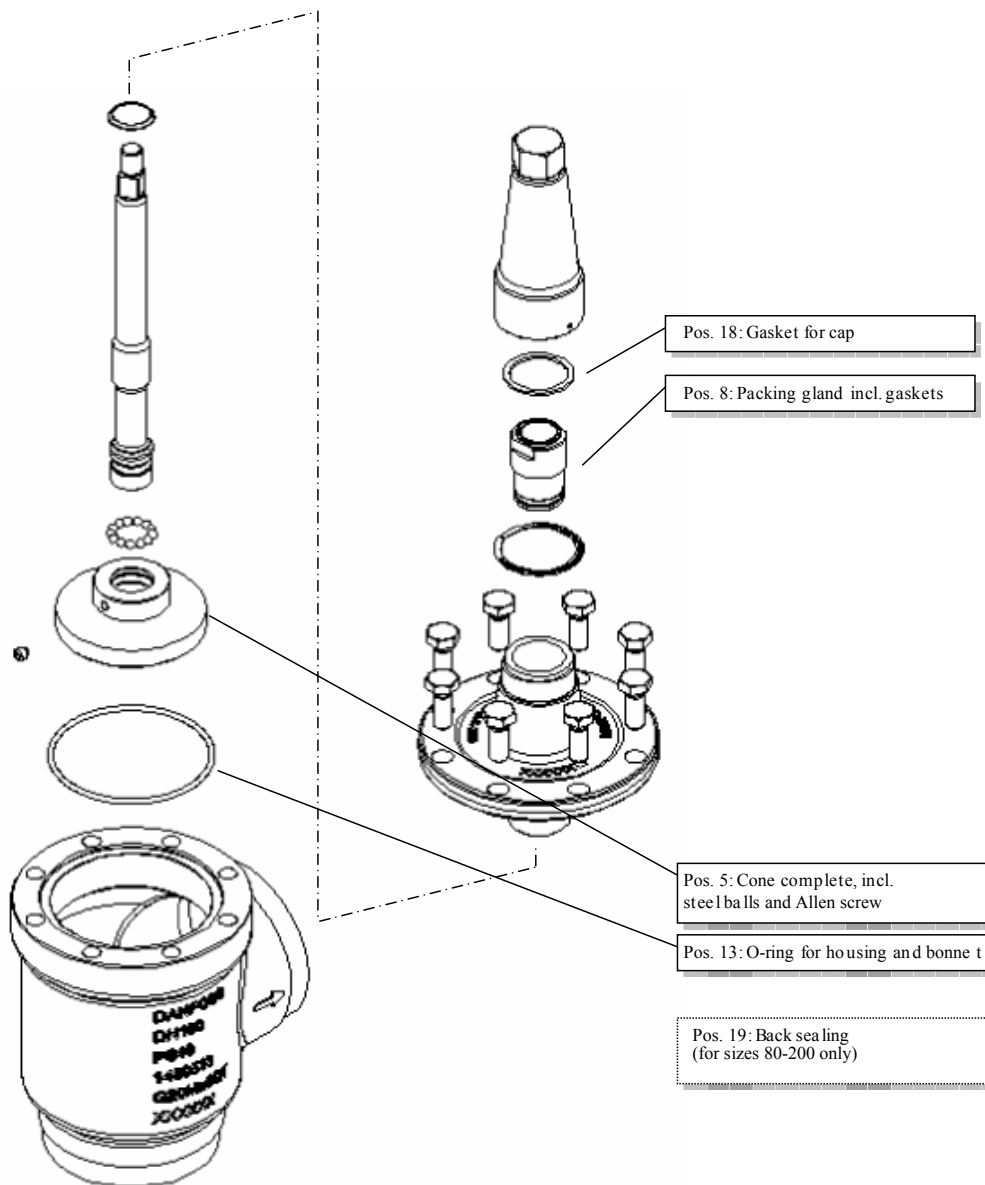


Fig. 11

### 2.1.12 Stop valves



The pos. numbers are included in the spare parts kits for SVA stop valve.

Fig. 12

- Inspection kit:** Gaskets, O-rings and aluminium rings.
- Repair kit:** Complete packing gland (Pos. 8), gaskets, O-rings and aluminium rings.
- Overhaul kit:** Cone with steel balls (Pos. 5), complete packing gland (Pos. 8), gaskets, O-rings and aluminium rings.

### 2.1.13 Suction filters

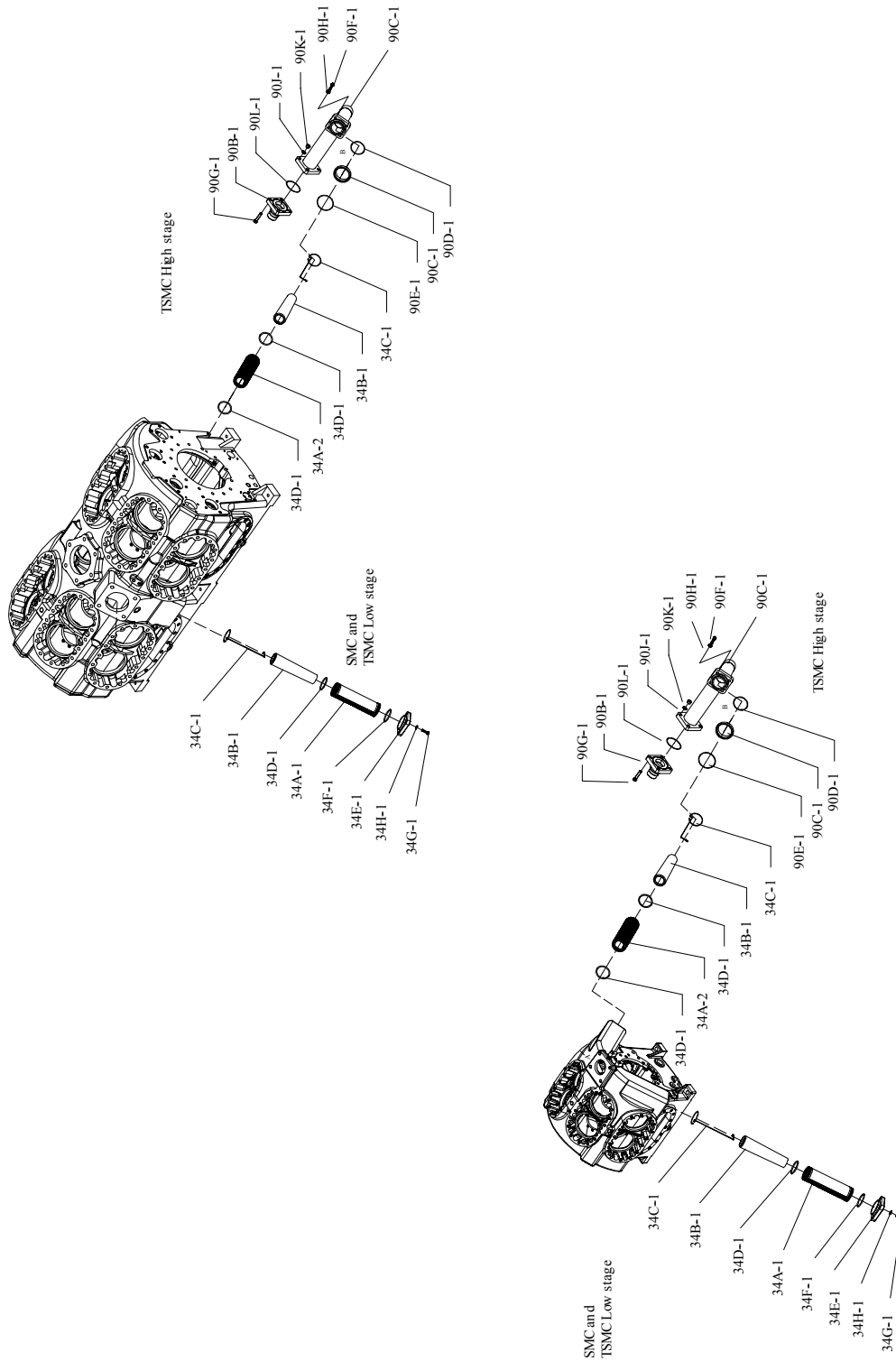


Fig. 13

### 2.1.14 Thermo pump cover

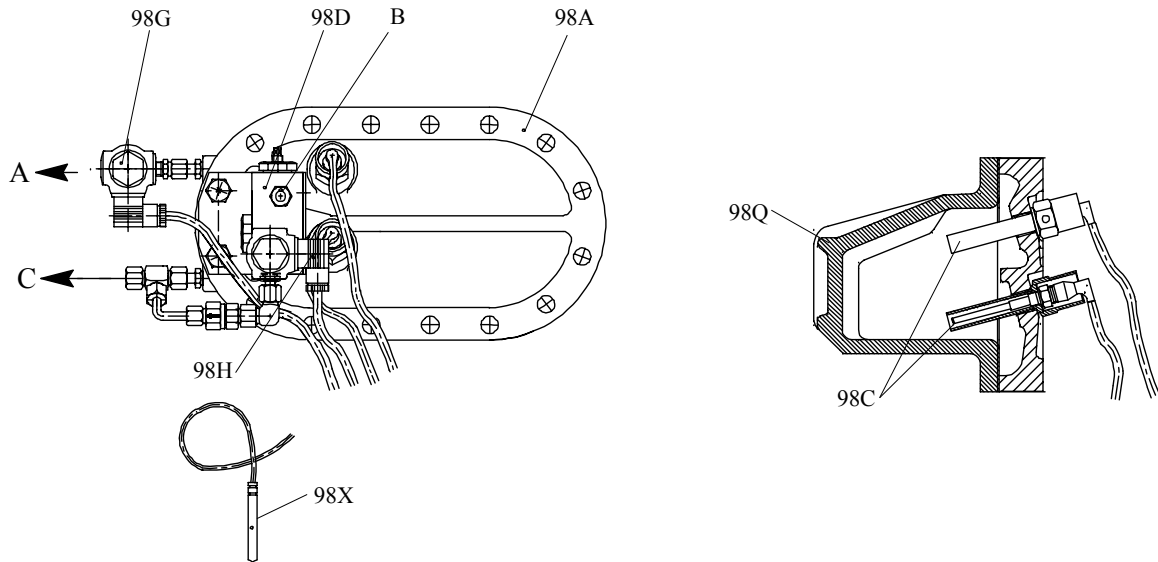


Fig. 14

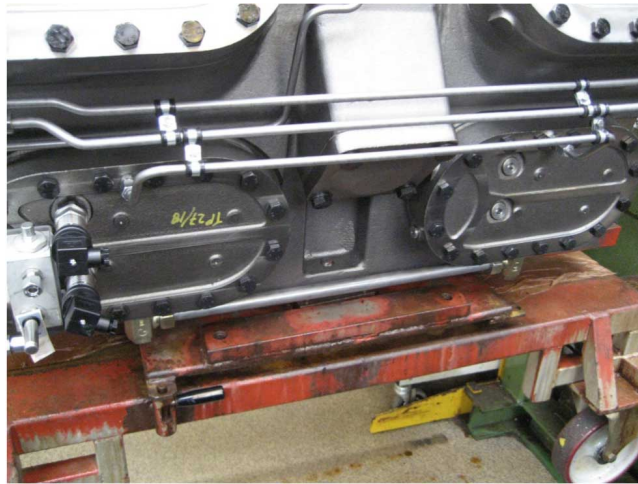


Fig. 15

### 2.1.15 Analogue control and safety equipment

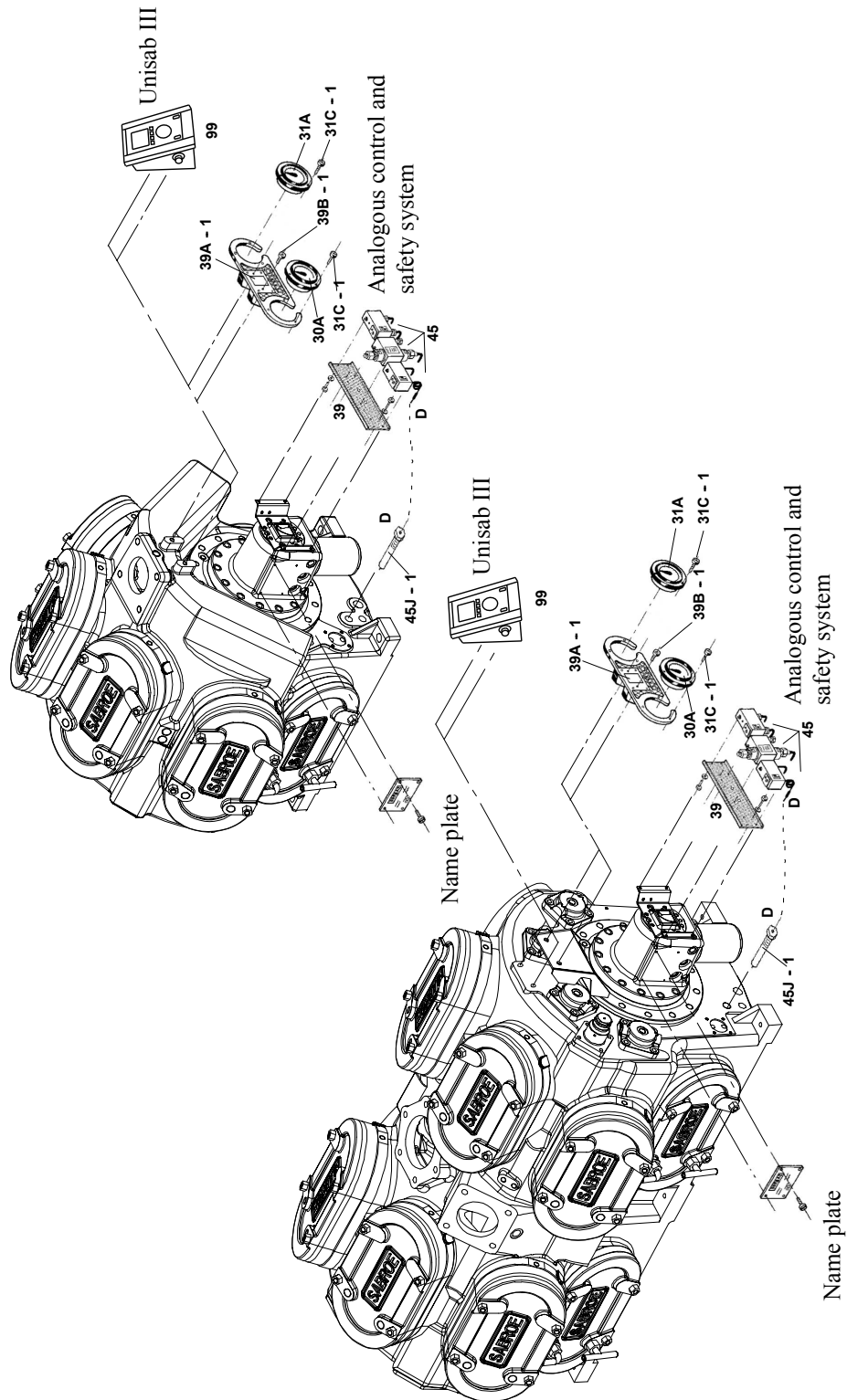


Fig. 16

### 2.1.16 Coupling AMR 312

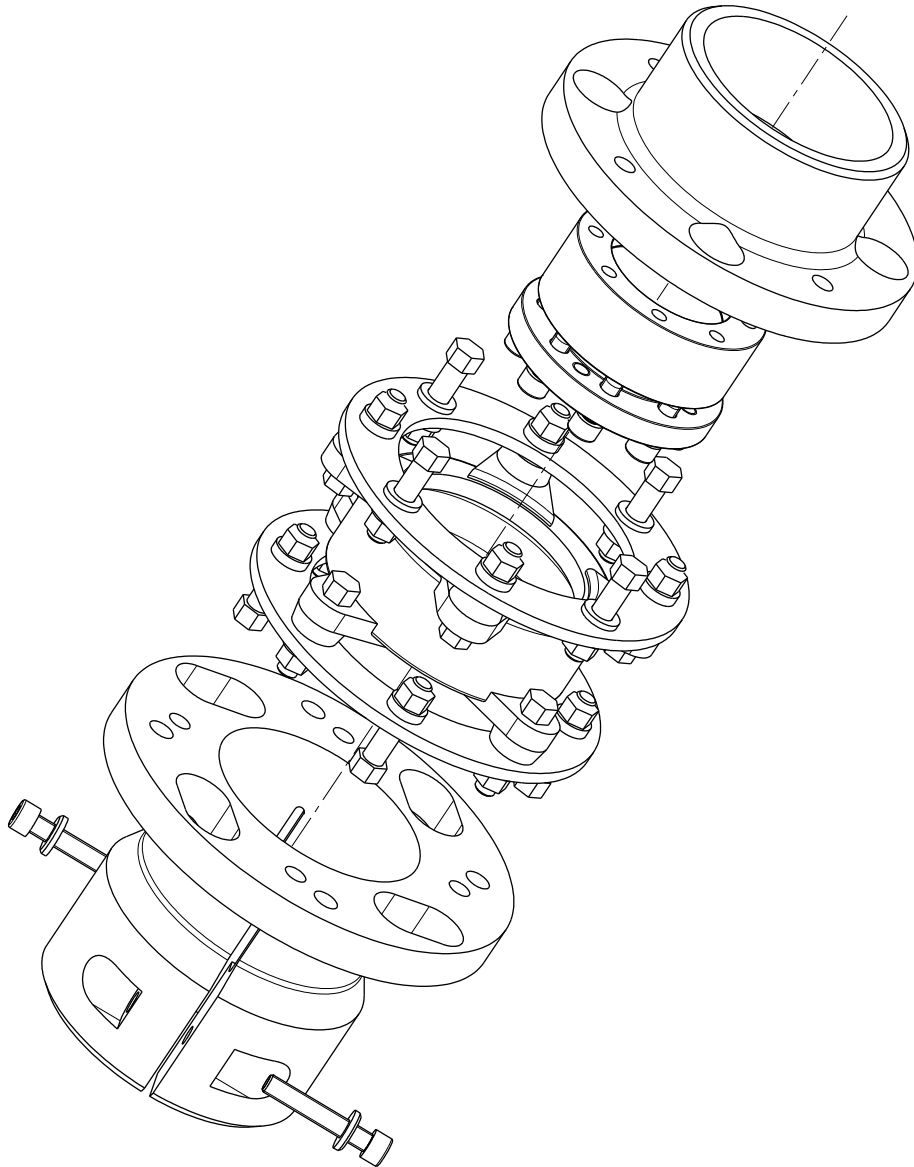


Fig. 17: AMR 312 Exploded

### 2.1.17 Coupling CFA

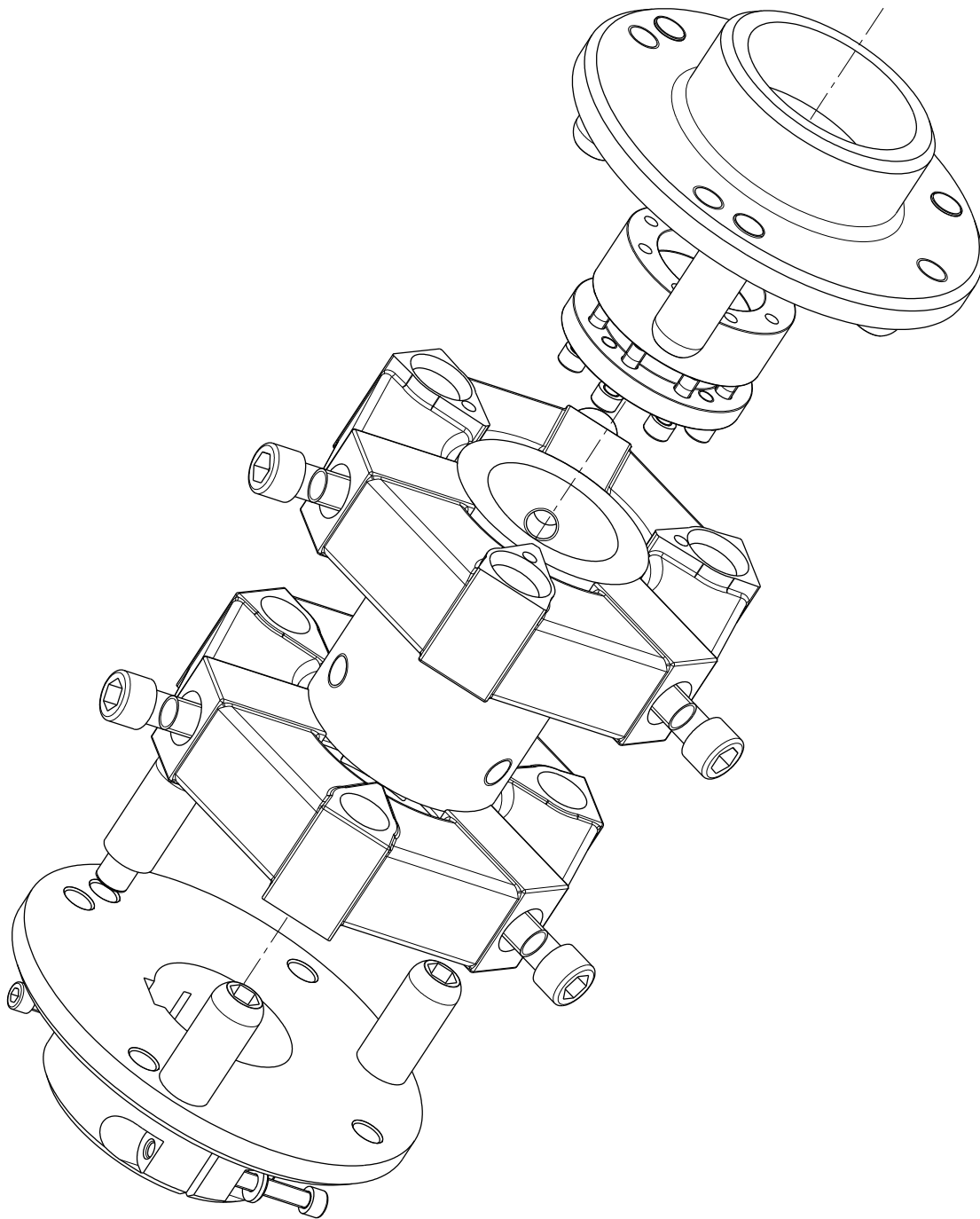


Fig. 18: CFA 90 Exploded

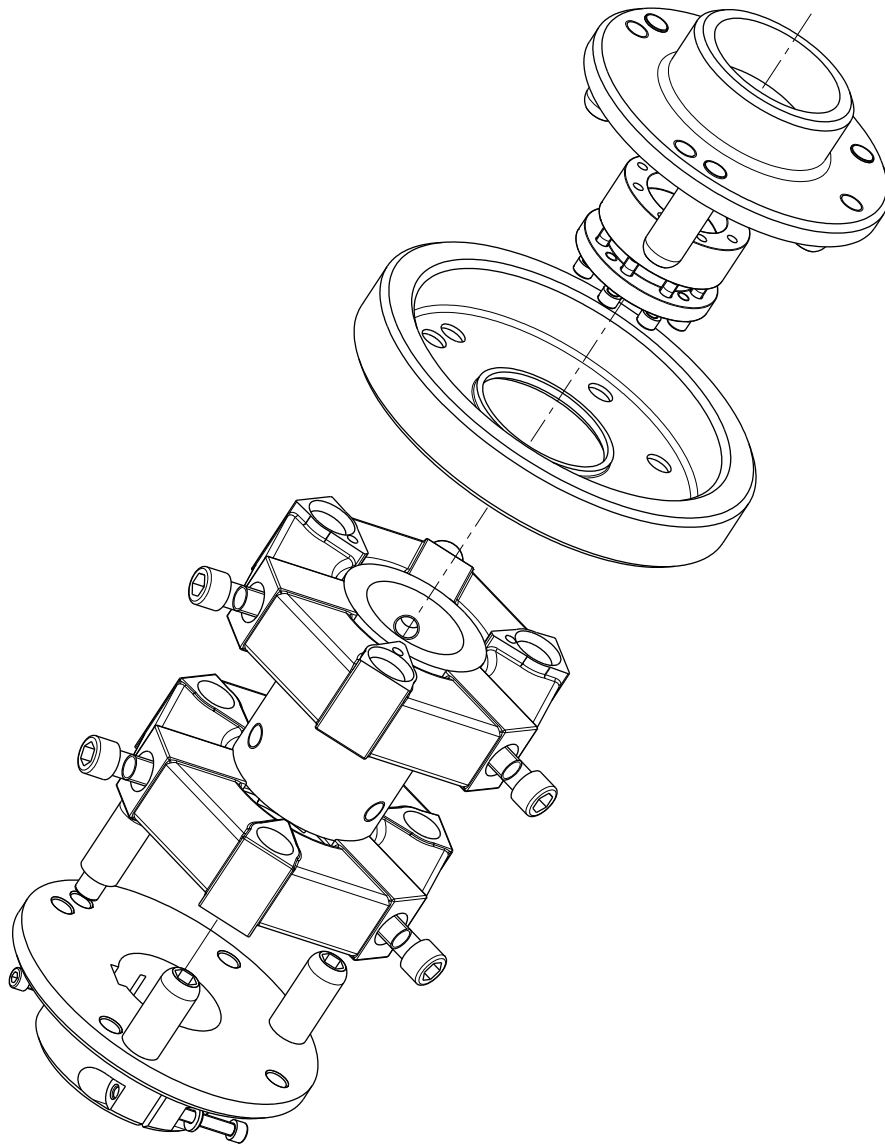


Fig. 19: CFA 90 with flywheel



### 2.1.18 Solenoid valve controlled oil return

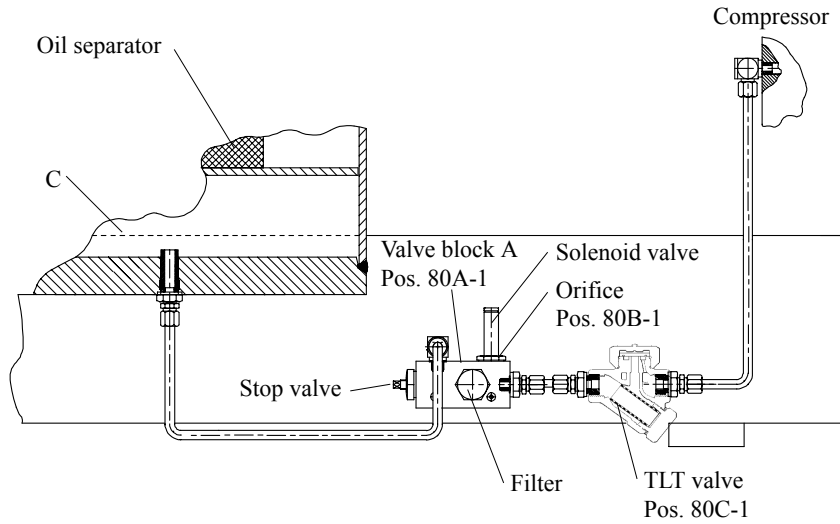


Fig. 20

### 2.1.19 Oil separator, OHUR

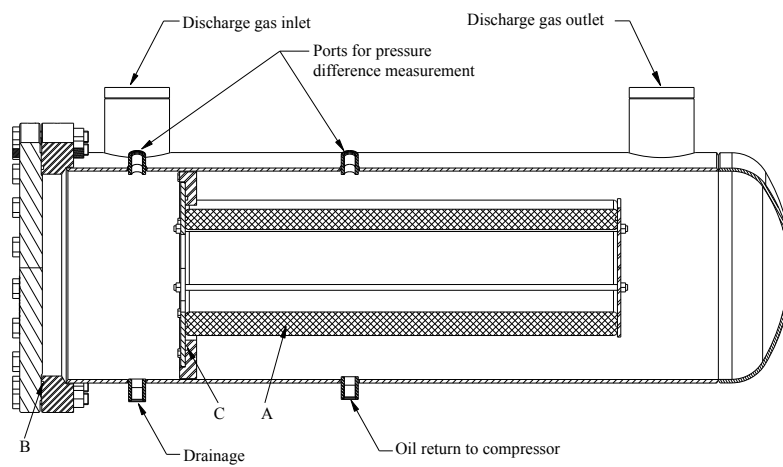


Fig. 21